



CONTRACTING DIVISION PRE-QUALIFICATION FILE



Doha, Qatar Office
P.O Box 40889
Tel.+974-4693940
Fax.+974-4693941

Abu Dhabi Office
P.O Box 47010
Tel.+971-2-4434422
Fax.+971-2-4465540

Dubai Office
P.O Box 2264
Tel.+971-4-2679095
Fax.+971-4-2679404

Sharjah Head Office
P.O Box 5629
Tel.+971-6-5432436
Fax.+971-6-5434139

Email : adhcd@verger-delporte.ae
mail@verger-delporte.ae
Website : www.verger-delporte.ae



TABLE OF CONTENTS

- 1.0 INTRODUCTION
- 2.0 ORGANISATION CHART
- 3.0 SCOPE OF WORK
- 4.0 MARKETING TENDERS
- 5.0 DESIGN OFFICE
- 6.0 PROJECT EXECUTION
- 7.0 INSTALLATION & WARRANTY
- 8.0 MAJOR COMPLETED PROJECTS
- 9.0 ONGOING PROJECTS
- 10.0 OTHER PROJECT REFERENCES



1.0 INTRODUCTION

Verger et Delporte UAE Ltd.'s Electrical and Mechanical Contracting division undertakes contracts on the full electro-mechanical spectrum. This includes Air-conditioning, Electrical, Plumbing, Fire alarm, Fire fighting and Low Voltage Systems which include Public Address System, Central Satellite TV & IPTV Systems, Uninterruptible Power supply System, CCTV System, Access Control System, Home Automation & BMS etc.

Well established over the years, the division has proven its ability in the MEP segment for the quality & standard of work delivered. It has been awarded some of the most prestigious projects, which has made Verger one of the leading competitive MEP contractor in the UAE. The strong workforce & dedication of every individual has contributed towards the success of the organization.

Verger has diversified its activities into 5 operating divisions which are:

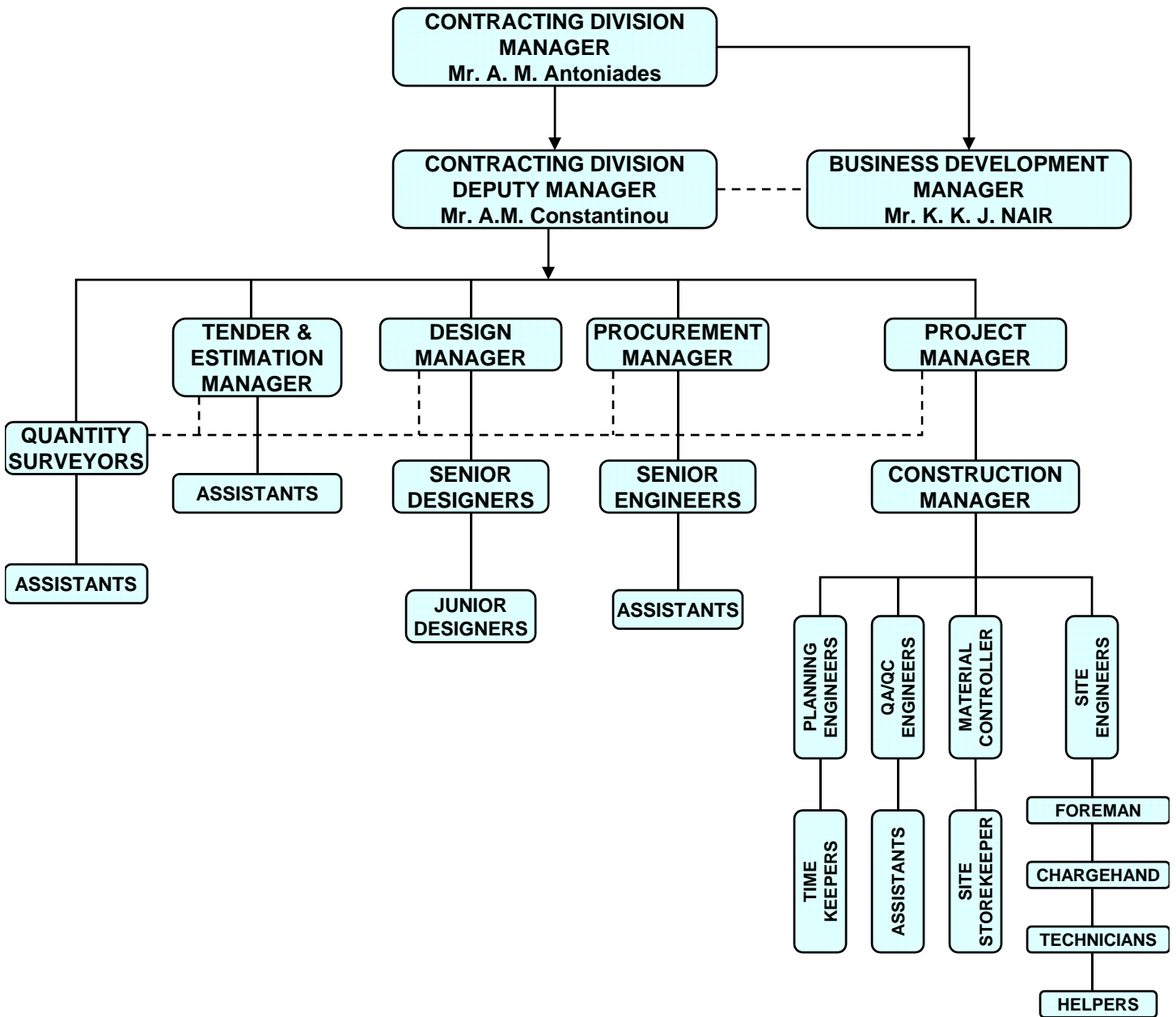
- Contracting Division
- Switchgear Manufacturing Division
- Trading Division
- IT Division
- Low Voltage Division

The 4 supporting Departments are:

- QHSE Department
- Finance Department
- Administration Department
- Logistics Department



2.0 ORGANISATION CHART





3.0 SCOPE OF WORK

The division has been dimensioned to cope up with comprehensive Electromechanical Works which include:

- Project Management
- Project Engineering
- Design
- Materials Selection and Procurement
- Installation
- Testing and Commissioning
- Maintenance

This division operates strictly under the applicable technical and safety requirements, through a thorough knowledge of B.S. and I.E.C. Standards as well as Regulations imposed by the local Government departments.

In addition to its core operations located in Sharjah head office it has also set up regional branches in Dubai, Abu Dhabi, Al Ain and Qatar, in order to meet the market growing needs.

Below is a listing of the specialized sectors in which the division has excelled in:

- Commercial and Residential Buildings
- Public and Private Establishments
- Hotels and Resorts
- Industrial Facilities / Workshops
- Vehicular closed parking facilities
- Hangars and Airport Terminals
- Hospital and Medical Facilities
- Accommodation Facilities
- Educational Facilities / Universities / Schools
- Palaces and Private Villas



3.0 SCOPE OF WORK

Below is a listing of the various work activities in which the division excels

Electrical

- Power Transmission / Distribution
- Residential / Commercial / Industrial / Oil field Installations
- Uninterruptible Power Supply Systems
- Fire Detection Systems / Water Leak Detection Systems / Fire Alarm System
- Earthing and Lightning Protection Systems
- Public Address Systems
- Central / Satellite TV systems / IPTV Systems
- Telephone & Intercom Systems
- Interior & Exterior Lighting
- Central Battery Emergency Lighting Systems
- Closed Circuit TV Systems
- Access Control & Security Systems
- Building Management Systems



HVAC System

- Central Heating
- Air Conditioning
- Chilled Water Systems
- Ducted & Non-ducted Split Unit Systems
- VRV System
- Package Units
- Ventilation – Fresh Air & Extract Systems
- HVAC Controls and Monitoring Systems





3.0 SCOPE OF WORK

Plumbing

- Cold Water Distribution
- Hot Water Distribution (Local Water Heater / Central Hot Water System)
- Domestic Water Filtration Systems
- Water Leak Detection Systems
- Central Cooling Systems
- Water Features and Irrigation Systems
- Drainage – Soil/Waste and Vent Systems
- Storm Water Drainage
- Sewage Treatment Plants
- Waste Water Treatment Systems



Fire Fighting

- Fire Hose Systems
- Fire Detection Systems
- Sprinkler systems
- Fire Extinguishers
- Fire Suppression Systems



Fuel/Oil – Storage and distribution

Compressed Air systems

LP-GAS Systems



4.0 MARKETING TENDERS

Entrusted to the Assistant Manager (Marketing and Business Development), who closely coordinates with his Division's Manager and the General Manager, the duties require an acute knowledge of the market and its related chain of decisions: end users, local authorities, consultants, main contractors...

From the very early stages of contact with the client up to the internal contract review, the Assistant Manager- Marketing and Business Development will act as a facilitator, to obtain the very best level of understanding between the client the company, which will be later be bound by a flawless contract within the proven limits of Verger et Delporte UAE Ltd.

Under the supervision of a qualified engineer, a sound and efficient business approach to attain the best technical solutions devised asserting to the needs of the client.

Based on the updated list from approved suppliers, it will be the task of the Tender & Estimation Manager to make a right decision between the suppliers based on whose materials quality/price ratio together with after sales support will best fit the client's particular requirements.

Always on a technological watch, the engineers will strive to make the client benefit from the latest market development in electro-mechanical installation, if allowed to do so.

Worked out in close association with the other sections, if required, the offer will be subsequently checked by the management to ensure its relevance and suitability.



5.0 DESIGN OFFICE

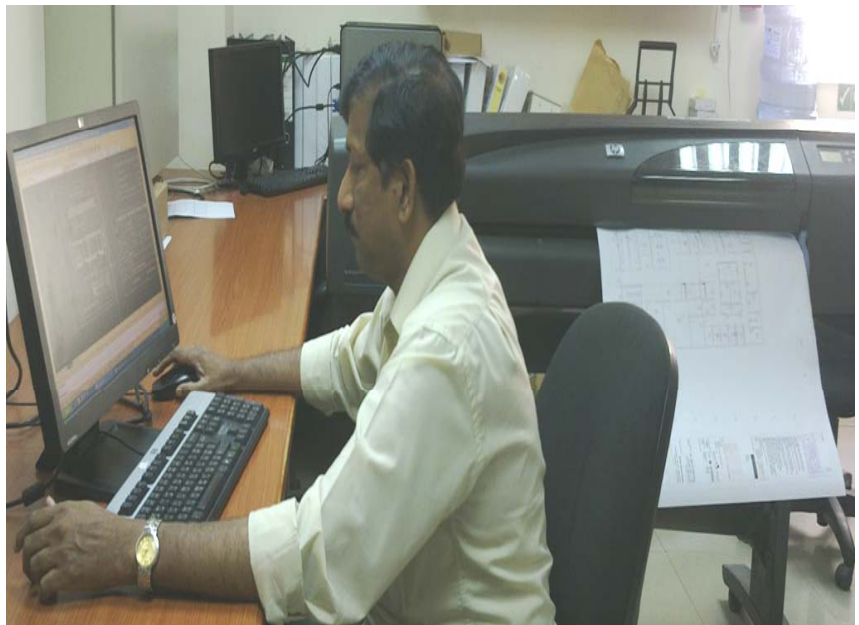
Thoughtfully entrusted to a qualified Design Manager, the Design tasks are split up between the Electrical and the Mechanical sections, in view to preserve the best of specialized competencies and foster maximum creativity in the two domains.

From the initial job assignments, optimally planned within the general time schedule, the project joint works are all the more facilitated that the designers carry out their duties in a single room.

The electrical and mechanical drawings, designed under the latest widely coveted AutoCAD software, on

powerful PCs have to pass through successive control steps which include the checking phase by the Design Coordinator, often followed by an additional management verification for complex jobs, before the final submittal for consultant approval.

Profiting by the latest technology which includes a high capacity A0 plotter, the design section's output has substantially grown in production, quality and reliability, giving nothing but entire satisfaction to the clients.





6.0 PROJECT EXECUTION

Adequately programmed from a collaboration of all sections (Tender, Design, Material, Procurement, Logistic and Site teams), which produce a collection of expert advise, the project is entrusted to a Contract Coordinator, under the overall supervision of the Contracting Division Manager.

Drawings and materials approval by the consultant stand as the starting point of all related site works, to be executed, tested, commissioned, and handed over to the client, within the allotted times.

Suitably manned as per the updated workload, the site is initially organized according to the specification of the job; hierarchical levels optimized in order to get the best output from responsible and earnest personnel. Current site competencies and resources can be described as follows:

- Contract Coordinators on assignment, exercising functional responsibilities
- Incumbent Site Engineers, guiding Foremen or Team-Leaders
- Senior, Junior Electricians or Plumbers
- Safe and well-suited transport and handling means

Carefully controlled quality tools and electrical appliances, make up actual conditions for a quality and productive job on site; source of satisfaction from the contractor to the end user.

The installation phase of the works, will be undertaken in accordance with the scope of work, requirements of the Quality Plan, Method Statements and to time constraints as defined in the approved coordinated Installations Program.



6.0 PROJECT EXECUTION

The organization chart will indicate structure of engineering and installation staff assuring proper & clear channels of communication, accountability and responsibility of the Project Team

Detailed method statements where considered appropriate to the needs of project will be prepared to ensure the minimum deviation and accuracy on task execution.

All project engineers will be reporting to the Construction manager and coordinating with other main contractor and sub-contractor personnel for maintaining quality and achieving program requirements.



7.0 INSTALLATION & WARRANTY

INSTALLATION

Clearly of outstanding concerns for the consultant, the main contractor or end user, the Final visual inspection, Pre-commissioning, Commissioning duties are entrusted to duly authorized personnel, often certified by local authorities for specific type of operations.

These people are reckoned among site people, allotted with the appropriate equipment and measuring instruments which are carefully controlled (outside calibration when needed, program of internal periodical check, etc.)

The client is given an Operation and Maintenance Manual, where it will hold all relevant information necessary for a safe and efficient operating of the installation

WARRANTY

The client can call Verger et Delporte UAE Ltd for intervention within the warranty period stipulated by the contracts (a defined period from the site hand over) provided the issue prior assessment confirms it is in our scope of work.

An experienced team, equipped with proper tools or/and instruments, conduct the required maintenance, using the already released Instructions and the Maintenance Manual.



8.0 MAJOR COMPLETED PROJECTS



PROJECT	: UAE UNIVERSITY
DESCRIPTION	: VARIOUS FACILITY BLOCKS
LOCATION	: AL AIN
CLIENT	: MUBADALA DEVELOPMENT COMPANY PJSC
CONSULTANT	: COX
MAIN CONTRACTOR	: OGER ABU DHABI LLC
COMPLETION	: DECEMBER 2010
VALUE IN DHS.	: 420,000,000.00

SCOPE OF WORKS

➤HVAC

The works include the supply, installation, testing & commissioning of fresh air handling units with run around coils, fan coil units, humidifiers, dehumidifiers, variable air volume units, duct heaters, laboratory fume, spectrometer & calorifier extract systems, car park, kitchen & toilet extract fans with all associated duct works, pipe works and controls. Chilled water for the project (30 buildings with total cooling load of 56,160 Kw) is fed from Tabreed district cooling plant.

➤Plumbing

The works include the supply, installation, testing & commissioning of GRP water tanks, transfer & booster pump sets, central hot water calorifiers, domestic water cooling and drainage systems with all associated pipe works.

➤Fire Fighting

The works include the design, supply, installation, testing & commissioning of automatic hose reel, dry risers with landing valves, sprinkler, kitchen hood, foam, and clean agent systems with all associated pipe works.

➤ Electrical

The works include the supply, installation, testing & commissioning of LV panels, sub main & final distribution boards, lighting, power, earthing & lightning protection, CO monitoring, access control, CCTV, fire alarm & voice evacuation, SMATV, dimming control, structured cabling with real time monitoring & building management systems with all associated containment and cabling. Electrical power supply is fed from 11 Nos 1500 KVA & 22 Nos 1000 KVA transformers.



8.0 MAJOR COMPLETED PROJECTS



PROJECT	: ABU DHABI UNIVERSITY NEW CAMPUS AT KHALIFA CITY
DESCRIPTION	: CLASS ROOM BUILDINGS, LIBRARY, CANTEEN & OTHER FACILITIES
LOCATION	: ABUDHABI
CLIENT	: ABU DHABI UNIVERSITY
CONSULTANT	: ARKONSULT
MAIN CONTRACTOR	: AL MERAIKHI GENERAL CONTRACTING EST.
COMPLETION	: JANUARY 2008
VALUE IN DHS.	: 24,000,000.00

SCOPE OF WORK

➤ ELECTRICAL

The works include the supply, installation, testing & commissioning of HV panels, LV panels sub main & final distribution boards, earthing & lightning protection, structured cabling, audio visual, fire alarm & voice evacuation, lighting control and public address systems with all associated containment cabling. Electrical power supply is fed from 5 Nos 1500 KVA transformers and emergency power supply from 1 No 1000 KVA generator.



8.0 MAJOR COMPLETED PROJECTS



PROJECT	: ETIHAD AIRWAYS HQ BUILDING COMPLEX
DESCRIPTION	: ETIHAD HQ BUILDING & TRAINING ACADEMY
LOCATION	: ABU DHABI
CLIENT	: ETIHAD AIRWAYS
CONSULTANT	: ARCHITECTURAL CONSULTING GROUP
MAIN CONTRACTOR	: AL GHAFLY GENERAL CONTRACTING WLL
COMPLETION	: AUGUST 2008
VALUE IN DHS.	: 46,300,000.00

SCOPE OF WORKS

➤HVAC

The works include the supply, installation, testing & commissioning of plate heat exchangers, primary & secondary chilled water pumps, fresh air handling units with heat recovery wheels, fan coil units, stair well pressurization, car park, kitchen & toilet extract fans with all associated duct works, pipe works and controls. Chilled water for the project (total cooling load of 4200 Kw) is fed from Tabreed district cooling plant.

➤Plumbing

The works include the supply, installation, testing & commissioning of GRP water tanks, booster pump sets and drainage systems with all associated pipe works.

➤Fire Fighting

The works include the design, supply, installation, testing & commissioning of fire pumps, automatic hose reel, dry risers with landing valves, sprinkler, kitchen hood, foam, and clean agent systems with all associated pipe works.

➤ Electrical

The works include the supply, installation, testing & commissioning of, LV panels, generator, sub main & final distribution boards, lighting, power, earthing & lightning protection, CO monitoring, access control, gate barrier, CCTV, audio visual, fire alarm & voice evacuation, SMATV, dimming control, structured cabling & building management systems with all associated containment and cabling. Electrical power supply is fed from 4 Nos 1500 KVA transformers and emergency power supply from 1 No 800 KVA & 1 No 350 KVA generators.



8.0 MAJOR COMPLETED PROJECTS



PROJECT	: RITZ CARLTON HOTEL
DESCRIPTION	: 340 HOTEL ROOM & SUITES
LOCATION	: DUBAI
CLIENT	: UNION PROPERTIES PJSC
CONSULTANT	: HYDER CONSULTING MIDDLE EAST LLC
MAIN CONTRACTOR	: BOUYGUES CONSTRUCTION / TARGET ENGINEERING CONSTRUCTION COMPANY WLL – JOINT VENTURE
COMPLETION	: MARCH 2009
VALUE IN DHS.	: 188,500,000.00

SCOPE OF WORKS

➤HVAC

The works include the design, supply, installation, testing & commissioning of plate heat exchangers, primary & secondary chilled water pumps, fresh air handling units, fan coil units, stair well pressurization, car park, kitchen & toilet extract fans with all associated duct works, pipe works and controls. Chilled water for the project (total cooling load of 22,500 Kw) is fed from Empower district cooling plant.

➤Plumbing

The works include the design, supply, installation, testing & commissioning of GRP water tanks, transfer & booster pump sets, central hot water boilers, central water filtration, rain water collection and drainage systems with all associated pipe works.

➤Fire Fighting

The works include the design, supply, installation, testing & commissioning of fire pumps, automatic hose reel, dry risers with landing valves, sprinkler, kitchen hood, foam, and clean agent systems with all associated pipe works.

➤Electrical

The works include the design, supply, installation, testing & commissioning of, LV panels, generator, sub main & final distribution boards, lighting, power, earthing & lightning protection, CO monitoring, access control, gate barrier, CCTV, audio visual, fire alarm & voice evacuation, IPTV, dimming control, structured cabling, central battery & building management systems with all associated containment and cabling. Electrical power supply is fed from 14 Nos 1500 KVA transformers and emergency power supply from 1 No 1750 KVA & 1 No 1250 KVA generators.



8.0 MAJOR COMPLETED PROJECTS



PROJECT	: ROTANA BEACH RESORT
DESCRIPTION	: B+G+4F RESORT & 10 CHALETS
LOCATION	: FUJAIRAH
CLIENT	: H.H.SH. SUROOR BIN MOHD. AL NAHYAN
CONSULTANT	: ARCHITECTURAL CONSULTING GROUP
MAIN CONTRACTOR	: CATIC – THE CHINESE COMPANY
COMPLETION	: DECEMBER 2006
VALUE IN DHS.	: 30,000,000.00

SCOPE OF WORKS

➤HVAC

The works include the design, supply, installation, testing & commissioning of air cooled chillers (4 Nos with total cooling capacity of 2800 Kw), primary & secondary chilled water pumps, fresh air handling units, fan coil units, kitchen & toilet extract fans with all associated duct works, pipe works and controls.

➤Plumbing

The works include the design, supply, installation, testing & commissioning of GRP water tanks, transfer & booster pump sets, central hot water calorifiers, central water filtration and drainage systems with all associated pipe works.

➤Fire Fighting

The works include the design, supply, installation, testing & commissioning of fire pumps, automatic hose reel, dry risers with landing valves, external fire hydrants, sprinkler, kitchen hood, foam, and clean agent systems with all associated pipe works.

➤ Electrical

The works include the design, supply, installation, testing & commissioning of LV panels, generator, sub main & final distribution boards, lighting, power, earthing & lightning protection, access control, gate barrier, CCTV, audio visual, fire alarm & voice evacuation, SMATV, dimming control, structured cabling, & building management systems with all associated containment and cabling. Electrical power supply is fed from 3 Nos 2000 KVA transformers and emergency power supply from 1 No 500 KVA generator.



8.0 MAJOR COMPLETED PROJECTS

PROJECT	: AL YASSAT TOWER
DESCRIPTION	: B+G+40 RESIDENTIAL BUILDING
LOCATION	: DUBAI
CLIENT	: AL GAITH HOLDING PJSC
CONSULTANT	: NATIONAL ENGINEERING BUREAU
MAIN CONTRACTOR	: DHABI CONTRACTING EST.
COMPLETION	: DECEMBER 2007
VALUE IN DHS.	: 120,000,000.00

SCOPE OF WORKS

➤ HVAC

The works include the design, supply, installation, testing & commissioning of water cooled chillers (2 Nos, 11kV chillers with total cooling capacity of 14,000 Kw), cooling tower (4 cells forced draft type with 16,419 Kw heat rejection capacity), condenser water pumps, plate heat exchangers, primary & secondary chilled water pumps, fresh air handling units with heat recovery wheels, fan coil units, stair well pressurization, car park, kitchen & toilet extract fans with all associated duct works, pipe works and controls.

➤ Plumbing

The works include the design, supply, installation, testing & commissioning of GRP water tanks, transfer & booster pump sets, central gas fired hot water boiler with calorifiers, central water filtration, domestic water cooling and drainage systems with all associated pipe works.

➤ Fire Fighting

The works include the design, supply, installation, testing & commissioning of fire pumps, automatic hose reel, dry risers with landing valves, sprinkler, kitchen hood, foam, and clean agent systems with all associated pipe works.

➤ Electrical

The works include the design, supply, installation, testing & commissioning of HV panels (for chillers), LV panels, generator, sub main & final distribution boards, lighting, power, earthing & lightning protection, CO monitoring, access control, gate barrier, CCTV, audio visual, fire alarm & voice evacuation, SMATV, dimming control, structured cabling, video intercom, building management & energy saving systems with all associated containment and cabling. Electrical power supply is fed from 9 Nos 1500 KVA transformers and emergency power supply from 1 No 1000 KVA generator.





8.0 MAJOR COMPLETED PROJECTS



PROJECT	: BURJ OLD TOWN
DESCRIPTION	: 13 RESIDENTIAL BLOCKS
LOCATION	: DUBAI
CLIENT	: EMAAR PROPERTIES PJSC
CONSULTANT	: ALLIED CONSULTANTS LTD
MAIN CONTRACTOR	: AL-FUTTAIM CARILLION LLC
COMPLETION	: DECEMBER 2006
VALUE IN DHS.	: 180,000,000.00

SCOPE OF WORKS

➤ HVAC

The works include the supply, installation, testing & commissioning of plate heat exchangers, tertiary chilled water pumps, fresh air handling units with recuperator, fan coil units, car park, kitchen & toilet extract fans with all associated duct works, pipe works and controls. Chilled water for the project (13 Nos buildings with total cooling load of 11,232 Kw) is fed from Tabreed district cooling plant.

➤ Plumbing

The works include the supply, installation, testing & commissioning of GRP water tanks, transfer & booster pump sets and drainage systems with all associated pipe works.

➤ Fire Fighting

The works include the design, supply, installation, testing & commissioning of fire pumps, automatic hose reel, dry risers with landing valves, sprinkler, kitchen hood, foam, and clean agent systems with all associated pipe works.

➤ Electrical

The works include the supply, installation, testing & commissioning of LV panels, generator, sub main & final distribution boards, lighting, power, earthing & lightning protection, CO monitoring, access control, gate barrier, CCTV, audio visual, fire alarm & voice evacuation, SMATV, dimming control, structured cabling, video intercom, central battery & building management systems with all associated containment and cabling. Electrical power supply is fed from 16 Nos 1500 KVA transformers and emergency power supply from 2 Nos 350 KVA, 2 Nos 400 KVA & 2 Nos 430 KVA generators.



8.0 MAJOR COMPLETED PROJECTS

PROJECT	: DALMA TOWER
DESCRIPTION	: B+G+40F HOTEL APARTMENTS
LOCATION	: DUBAI
CLIENT	: AL GAITH HOLDING PJSC
CONSULTANT	: NATIONAL ENGINEERING BUREAU
MAIN CONTRACTOR	: DHABI CONTRACTING EST.
COMPLETION	: DECEMBER 2007
VALUE IN DHS.	: 130,000,000.00

SCOPE OF WORKS

➤ HVAC

The works include the design, supply, installation, testing & commissioning of water cooled chillers (2 Nos, 11kV chillers with total cooling capacity of 15,000 Kw), cooling tower (4 cells forced draft type with 17,000 Kw heat rejection capacity), condenser water pumps, plate heat exchangers, primary & secondary chilled water pumps, fresh air handling units with heat recovery wheels, fan coil units, stair well pressurization, car park, kitchen & toilet extract fans with all associated duct works, pipe works and controls.

➤ Plumbing

The works include the design, supply, installation, testing & commissioning of GRP water tanks, transfer & booster pump sets, central gas fired hot water boiler with calorifiers, central water filtration, domestic water cooling and drainage systems with all associated pipe works.

➤ Fire Fighting

The works include the design, supply, installation, testing & commissioning of fire pumps, automatic hose reel, dry risers with landing valves, sprinkler, kitchen hood, foam, and clean agent systems with all associated pipe works.

➤ Electrical

The works include the design, supply, installation, testing & commissioning of HV panels (for chillers), LV panels, generator, sub main & final distribution boards, lighting, power, earthing & lightning protection, CO monitoring, access control, gate barrier, CCTV, audio visual, fire alarm & voice evacuation, SMATV, dimming control, structured cabling, video intercom, building management & energy saving systems with all associated containment and cabling. Electrical power supply is fed from 10 Nos 1500 KVA transformers and emergency power supply from 1 No 1000 KVA generator.





9.0 ONGOING PROJECTS



PROJECT	: VILLAS AT JUMEIRAH VILLAGE
DESCRIPTION	: 613 VILLAS
LOCATION	: DUBAI
CLIENT	: NAKHEEL PJSC
CONSULTANT	: ELLIS DON CONSULTING INC.
MAIN CONTRACTOR	: AL MERAIKHI GENERAL CONTRACTING EST.
COMPLETION	: ON HOLD
VALUE IN DHS.	: 120,000,000.00

SCOPE OF WORKS

➤ **HVAC**

The works include the supply, installation, testing & commissioning of ducted split units, kitchen & toilet extract fans with all associated duct works, pipe works and controls.

➤ **Plumbing**

The works include the supply, installation, testing & commissioning of GRP water tanks, transfer & booster pump sets, water heaters and drainage system with all associated pipe works.

➤ **Electrical**

The works include the supply, installation, testing & commissioning of main, sub main & final distribution boards, lighting, power, earthing, intercom, fire alarm, SMATV & structured cabling systems with all associated containment and cabling.



9.0 ONGOING PROJECTS



PROJECT : AL YASSAT TOWER
DESCRIPTION : G+40 RESIDENTIAL BUILDING
LOCATION : DUBAI
CLIENT : AL GAITH HOLDING PJSC
CONSULTANT : NATIONAL ENGINEERING BUREAU
MAIN CONTRACTOR : JC MACLEAN INTERNATIONAL FZCO
COMPLETION : DECEMBER 2011
VALUE IN DHS. : 25,000,000.00

SCOPE OF WORKS

➤ **MEP Interior Works**

The supply, installation, testing & commissioning of all MEP items for the interior fit out works



9.0 ONGOING PROJECTS

PROJECT	: NOVOTEL & IBIS HOTEL
DESCRIPTION	: 4B+G+25F HOTEL
LOCATION	: ABU DHABI
CLIENT	: H.H.SH.AHMED BIN SAIF MOHAMMED AL NAHYAN
CONSULTANT	: ARCHITECTURAL CONSULTING GROUP
MAIN CONTRACTOR	: CATIC – THE CHINESE COMPANY
COMPLETION	: JANUARY 2012
VALUE IN DHS.	: 120,000,000.00

SCOPE OF WORKS

➤HVAC

The works include the supply, installation, testing & commissioning of air cooled chillers (8 Nos with total cooling capacity of 6600 Kw), primary & secondary chilled water pumps, fresh air handling units with heat recovery wheels, fan coil units, stair well pressurization, car park, kitchen & toilet extract fans with all associated duct works, pipe works and controls.

➤Plumbing

The works include the supply, installation, testing & commissioning of GRP water tanks, transfer & booster pump sets, central hot water calorifiers, central water filtration and drainage systems with all associated pipe works.

➤Fire Fighting

The works include the design, supply, installation, testing & commissioning of fire pumps, automatic hose reel, dry risers with landing valves, sprinkler, kitchen hood, foam, and clean agent systems with all associated pipe works.

➤ Electrical

The works include the design, supply, installation, testing & commissioning of HV panels, transformers, LV panels, generators, sub main & final distribution boards, lighting, power, earthing & lightning protection, CO monitoring, access control, CCTV, audio visual, fire alarm & voice evacuation, dimming control, structured cabling, IPTV & media hub, building management & energy saving systems with all associated containment and cabling. Electrical power supply is fed from 6 Nos 1500 KVA transformers and emergency power supply from 2 Nos 600 KVA generators.





9.0 ONGOING PROJECTS



PROJECT	: MILLENNIUM GOLF RESORT
DESCRIPTION	: LG+UG+6F(TYP)+RF & 60 CHALETS
LOCATION	: AL AIN
CLIENT	: AL AIN EQUESTRIAN, SHOOTING & GOLF CLUB
CONSULTANT	: ARCHITECTURAL CONSULTING GROUP
MAIN CONTRACTOR	: EMIRATES BELBADI CONTRACTING CO.
COMPLETION	: JULY 2012
VALUE IN DHS.	: 65,500,000.00

SCOPE OF WORKS

➤HVAC

The works include the supply, installation, testing & commissioning of water cooled chillers (3 Nos with total cooling capacity of 8500 Kw), cooling tower (induced draft counter flow type), condenser water pumps, primary & secondary chilled water pumps, fresh air handling units with heat recovery wheels, fan coil units, stair well pressurization, kitchen & toilet extract fans with all associated duct works, pipe works and controls.

➤Plumbing

The works include the supply, installation, testing & commissioning of GRP water tanks, transfer & booster pump sets, central hot water calorifiers, central water filtration and drainage systems with all associated pipe works.

➤Fire Fighting

The works include the design, supply, installation, testing & commissioning of fire pumps, automatic hose reel, dry risers with landing valves, external fire hydrants, sprinkler, kitchen hood, foam, and clean agent systems with all associated pipe works.

➤Electrical

The works include the design, supply, installation, testing & commissioning of LV panels, generator, sub main & final distribution boards, lighting, power, earthing, access control, room management, CCTV, audio visual, fire alarm & voice evacuation, SMATV, dimming control, structured cabling, & building management systems with all associated containment and cabling. Electrical power supply is fed from 7 Nos 1500KVA transformers and emergency power supply from 1 No 500KVA & 1 No 50KVA generators.



9.0 ONGOING PROJECTS



PROJECT	: WATANI RESIDENTIAL DEVELOPMENT, PHASE 1
DESCRIPTION	: 303 VILLAS
LOCATION	: KHALIFA CITY A
CLIENT	: SOROUH REAL ESTATE COPANY PJSC
CONSULTANT	: PROJECT MANAGEMENT & DEVELOPMENT CONSULTANT
CONTRACTOR	: PAL TECHNOLOGY
COMPLETION	: APRIL 2012
VALUE IN DHS.	: 17,932,873.00

SCOPE OF WORK

➤ **MEP Infrastructure Works**

The works includes supply, installation, testing & commissioning of sewerage, storm water, potable water, irrigation and fire fighting networks for 303 villas



9.0 ONGOING PROJECTS



PROJECT	: WATANI RESIDENTIAL DEVELOPMENT, PHASE I
DESCRIPTION	: 303 VILLAS
LOCATION	: ABU DHABI
CLIENT	: SOROUH REAL ESTATE COMPANY PJSC
CONSULTANT	: EWAN ENGINEERING CONSULTANT
MAIN CONTRACTOR	: PAL TECHNOLOGY
COMPLETION	: APRIL 2012
VALUE IN DHS.	: 63,327,000.00

SCOPE OF WORKS

➤ **HVAC**

The works include the supply, installation, testing & commissioning of ducted split units, kitchen & toilet extract fans with all associated duct works, pipe works and controls.

➤ **Plumbing**

The works include the supply, installation, testing & commissioning of GRP water tanks, transfer & booster pump sets, water heaters and drainage systems with all associated pipe works.

➤ **Electrical**

The works include the supply, installation, testing & commissioning of main, sub main & final distribution boards, lighting, power, earthing, fire alarm, SMATV & structured cabling systems with all associated containment and cabling.



9.0 ONGOING PROJECTS



PROJECT	: AMBULATORY CLINICS CONTRACT # 181
DESCRIPTION	: 3 No. HEALTH CLINIC
LOCATION	: AL AIN
CLIENT	: ABU DHABI HEALTH SERVICES COMPANY (SEHA)
CONSULTANT	: HDP (OVERSEAS) LTD
MAIN CONTRACTOR	: CIVIL POWER GENERAL CONTRACTING LLC
COMPLETION	: MARCH 2012
VALUE IN DHS.	: 27,287,000.00

SCOPE OF WORKS

➤HVAC

The works include the supply, installation, testing & commissioning of air cooled chillers (6 Nos with total cooling capacity of 2570 Kw), package units (4 Nos with total cooling capacity of 297 Kw), primary & secondary chilled water pumps, fresh air handling units, fan coil units, electric duct heater, variable air volume units, closed control units & toilet extract fans with all associated duct works, pipe works and controls.

➤Plumbing

The works include the design, supply, installation, testing & commissioning of GRP water tanks, transfer & booster pump sets, central hot water calorifiers, central water filtration and drainage systems with all associated pipe works.

➤Fire Fighting

The works include the design, supply, installation, testing & commissioning of fire pumps, automatic hose reel, dry risers with landing valves, foam, and clean agent systems with all associated pipe works.

➤Electrical

The works include the design, supply, installation, testing & commissioning of , LV panels, generators, sub main & final distribution boards, lighting, power, earthing, public address, staff attendance, nurse call, master clock, CCTV, fire alarm, SMATV& structured cabling systems with all associated containment and cabling. Electrical power supply is fed from 2 Nos 1500 KVA & 1 No 1000 KVA transformers and emergency power supply from 2 Nos 1000 KVA & 1 No 500 KVA generators.



10.0 OTHER PROJECT REFERENCES

SI No.	CLIENT / CONSULTANT	JOB TITLE / NATURE OF JOB	LOCATION	VALUE (AED)	STARTING DATE	COMPLETION
1	P.W.D. ABU DHABI SERI RENAULT	CHAMBER OF COMMERCE BLDG, ELECTRO-MECH. WORKS	ABU DHABI	15,415,000.00	01.02.82	17.11.86
2	GOVT. OF SHARJAH SIX CONSTRUCT LTD	SHARJAH TELEVISION ELECTRO MECHANICAL WORKS	SHARJAH	14,320,000.00	15.10.86	31.08.88
3	AL MUREIKHY ARAB CONSULTANT	CORNICHE GOLDEN TOWER - ELECTRO-MECH. WORKS	ABU DHABI	7,460,000.00	01.04.83	31.12.85
4	SAINRAPT HAMAD CONT. Co. TRIP	CONTRACT No. 19 - UNDERPASS LIGHTING & STREET LIGHTING	ABU DHABI	3,180,000.00	10.08.85	28.02.86
5	GCC / IECA AL MANSOORIE SPECIALISED	HILAL MUMBARAK AL MANSOORIE BUILDING COMPLETE ELECTRO MECHANICAL WORKS	ABU DHABI	3,750,000.00	15.10.83	30.06.85
6	ATTO JUMA AL MAJID FITCH & CO.	ADNIA - VIP LOUNGE - COMPLETE ELECTRICAL WORKS INCLUDING CHANDELIERS	ABU DHABI	2,485,000.00	01.05.88	30.04.89
7	G H Q ABU DHABI EASTERN LTD	EC 745 - ELECTRO-MECHANICAL WORKS	ABU DHABI	1,472,000.00	15.09.87	31.03.88
8	TARMAC ENGINEERING CORPN. OF UAE ARMED FORCES	AL HAMRA MILITARY AIRPORT - ALL ELECTRICAL WORKS	ABU DHABI	2,985,000.00	01.02.78	31.10.80
9	GULFTON BUTEC	DUBAI TOWER COMPLEX - ENTIRE ELE. WORKS	DUBAI	5,470,000.00	25.03.82	31.12.83
10	TARMAC ENGINEERING CORPN. OF UAE ARMED FORCES	AL AIN BRIDGES - COMPLETE ELE. WORKS	AL AIN	695,000.00	01.05.79	30.07.80
11	ADDCAP REDPATH DORMAN LONG	DRY GRINDING MILL - SADIYAT ISLAND	ABU DHABI	1,195,000.00	01.06.82	30.11.83
12	ACC COGEM REGNAULT & PARTNERS	FRENCH CULTURAL CENTRE	ABU DHABI	1,591,000.00	01.02.80	31.01.81
13	RASHID DOUSERY COGEM / REGNAULT & PARTNERS	RECREATION COMPLEX - COMPLETE ELECTRICAL WORKS	AL AIN	2,188,000.00	01.05.82	28.02.84
14	SIX CONSTRUCT LTD HALCROW	GHANTOOT RESIDENCE FOR Dr. MANA SAEED AL OTAIBA ENTIRE ELECTRICAL WORKS	ABU DHABI	1,100,000.00	05.03.85	30.04.86
15	GOVT OF SHARJAH EASTERN LTD	SHARJAH TOWERS - ELECTRICAL WORKS	SHARJAH	2,000,000.00	15.01.85	31.10.86
16	AL BWARDY INVESTMENT TANNERY & SKINS INT'L.	TANNERY & DRY UNIT ELECTRO MECHANICAL WORKS	JEBEL ALI	1,200,000.00	20.09.87	31.03.88
17	UNO SIX ENGG. CORP. OF UAE ARMED FORCES	SUWEIHAN EC-499 ENTIRE ELECTRICAL WORKS	SUWEIHAN	12,000,000.00	01.09.79	30.09.81
18	KHOORY HILL CAB CONSULTANTS	2 Nos. SCHOOLS AT AL NAKHILAT & AL FALAJ - ELE. WORKS	SHARJAH	1,195,000.00	01.03.86	31.12.87



10.0 OTHER PROJECT REFERENCES

SI No.	CLIENT / CONSULTANT	JOB TITLE / NATURE OF JOB	LOCATION	VALUE (AED)	STARTING DATE	COMPLETION
19	SIX CONSTRUCT LTD HALCROW	PUMPING STATION No. 4 - COMPLETE ELECT. WORKS	SHARJAH	300,000.00		
20	D N A T A G C S S	ELECTRICAL WORKS AT DNATA BUILDING	DUBAI	600,000.00	20.10.89	28.02.90
21	ETISALAT RIGID CONSTRUCTION	CENTRAL STORES FOR DUBAI ETISALAT	DUBAI	825,000.00	10.05.89	31.12.89
22	FINE FAIR EASTERN LTD	FINE FAIR COMMERCIAL	SHARJAH	765,000.00	15.11.89	28.02.91
23	ECOLE FRANCAISE / ECOLE FRANCAISE	FRENCH SCHOOL	SHARJAH	500,000.00	05.07.90	20.02.91
24	ARABIAN CONSTRUCTION CO ARAB CONSULTANTS	BLDGS. FOR H.E. Sh. SULTAN BIN HAMDAN AL NAHYAN - ELECTRICAL WORKS	ABU DHABI	2,978,000.00	01.05.90	31.05.92
25	W E D / W E D, ABU DHABI	STREET LIGHTING PROJECT - INST-649	AL AIN	1,690,000.00	15.08.90	31.08.91
26	W E D / W E D, ABU DHABI	STREET LIGHTING PROJECT - INST-675	AL AIN	2,387,000.00	16.01.91	31.08.92
27	ARABIAN CONSTRUCTION COMPANY IAN BANHAM	BEACH HOTEL, ABU DHABI - FOR H.E. Sh. SUROOR BIN MOHD. AL NAHYAN - ELE. & PL WORKS.	ABU DHABI	6,808,000.00	15.07.91	31.07.94
28	DHAFIR DEVELOPMENT AND CONTRACTING CO	ZAKHER TOWER - ELECTRICAL WORKS	ABU DHABI	2,785,000.00	01.05.91	31.10.92
29	DHAFIR DEVELOPMENT AND CONTRACTING CO	AL KHAILY BUILDING - ELECTRICAL WORKS	ABU DHABI	1,625,000.00	01.08.91	31.12.92
30	ARABTEC SCTP MIDDLE EAST	GASCO BAB CAMP - ELECTRICAL & PLUMBING WORKS	ABU DHABI	8,100,000.00	14.03.91	31.12.92
31	GRANITE CONSTRUCTION CO SCTP MIDDLE EAST	GASCO NEW ASAB CAMP - ELECTRICAL & PLUMBING WORKS	ABU DHABI	9,380,000.00	01.12.91	30.06.93
32	DHAFIR DEVELOPMENT & CONTRACTING Co. ARAB CONS.	AL RAWDA CENTRE - ELECTRICAL WORKS	ABU DHABI	4,575,000.00	01.08.92	31.08.94
33	RIGID CONSTRUCTION CO	MINISTRY OF INTERIOR - ELECTRICAL & PLUMBING WORKS.	ABU DHABI	775,000.00	1989	1990
34	H.H. Sh. ZAYED BIN SULTAN AL NAHYAN GIAT Industries GREGORI INTERNATIONAL	EQUESTRIAN & RACING CENTRE, AL GHANTOOT, ELECTRICAL WORKS	ABU DHABI	3,120,000.00	27.07.94	31.05.95
35	FRENCH SCHOOL J.M. REGNAULT & PARTNERS GINCO CONTRACTING EST	BUILDING FOR FRENCH SCHOOL - ELECTRICAL & PLUMBING WORKS	DUBAI	565,000.00	16.03.94	30.09.94
36	KHALID EID AL MUREIKHI GODFREY HEATH & SPEARING/ KENNEDY & DONKINS HACCO ENGG. & CONST. Co.	COMM. BLDG. FOR Mr. KHALID EID AL MUREIKHI - ELECTRICAL & PLUMBING WORKS.	ABU DHABI	1,760,000.00	01.05.94	30.04.95



10.0 OTHER PROJECT REFERENCES

SI No.	CLIENT / CONSULTANT	JOB TITLE / NATURE OF JOB	LOCATION	VALUE (AED)	STARTING DATE	COMPLETION
37	NASIR RASHID AL MANA AL MANSOURI DEWAN ARCHITECTS & ENGINEERS HACCO ENGINEERING & CONSTRUCTION Co.	COMMERCIAL BUILDING FOR Mr. NASIR RASHID AL MANA AL MANSOURI - ELECTRICAL AND PLUMBING WORKS.	ABU DHABI	860,000.00	10.10.94	31.07.95
38	H.E. HAMIL BIN KHADIM AL GAITH ARAB CONSULTANTS DHAFIR DEVELOPMENT & CONTRACTING Co.	OFFICE BUILDING FOR H.E. HAMIL BIN KHADIM AL GAITH - (AL FARDOUS TOWER) ELECTRICAL WORKS.	ABU DHABI	3,850,000.00	10.12.93	30.11.95
39	RASHID BIN MUBARAK BIN SAIF AL REAMY & SONS ADNAN SAFFARINI HACCO ENGG. & CONST. CO.	COMM. BLDG. FOR Mr. RASHID BIN MUBARAK BIN SAIF AL REAMY & SONS - ELECTRICAL WORKS.	ABU DHABI	900,000.00	01.04.95	30.06.96
40	H.E. Sh. MANSOOR BIN ZAYED AL NAHYAN & H.E. Sh. ABDULLA BIN ZAYED AL NAHYAN IAN BANHAM & ASSOCIATES ACECO	BLDGS FOR H.E. Sh. MANSOOR BIN ZAYED AL NAHYAN AND H.E. Sh. ABDULLA BIN ZAYED AL NAHYAN - ELECTRICAL WORKS	ABU DHABI	4,700,000.00	01.02.94	31.03.95
41	GASCO ARAB CONSULTANT THE CONTRACTORS CO.	BAB SAFETY AND OFFICE BUILDING CONSTRUCTION AT BAB HABSHAN-ELECTRO-MECHANICAL WORKS	ABU DHABI	2,985,000.00	14.01.95	31.01.96
42	DIWAN OF H.H. THE CROWN PRINCE TEAM CONSULT DHAFIR DEVELOPMENT & CONT. CO	10 VILLAS FOR THE DIWAN OF H.H. THE CROWN PRINCE - ELECTRICAL WORKS.	ABU DHABI	890,000.00	01.03.96	31.08.96
43	P.W.D. WADE ADAMS UAE (WLL)	INTERNAL ROADS FOR 300 LOW COST HOUSES IN WADI EL FLAIE	ABU DHABI	434,000.00	15.02.96	31.08.96
44	H.E. Sh. KHADEM BIN BUTTY AL HAMED SYRCONSULT DHAFIR DEVELOPMENT AND CONTRACTING CO	ZAKHER TOWER Ph. II - ELECTRICAL WORKS	ABU DHABI	1,850,000.00	24.06.95	28.02.97
45	H.H. Sh. HAZZA BIN AYED AL NAHYAN GHAZI AWAD ENGINEERING CONSULTANT DHAFIR DEVELOPMENT AND CONTRACTING CO	RESIDENTIAL COMPOUND FOR H.H. Sh. HAZZA BIN ZAYED AL NAHYAN - ELECTRICAL WORKS	ABU DHABI	995,000.00	12.10.95	12.10.96
46	H.H. Sh. ZAYED BIN SULTAN AL NAHYAN CRSS INTERNATIONAL, INC ARAB TECHNICAL CONSTRUCTION CO	GHANTOOT RACING CLUB, POLO STABLES AND GRAND STAND - ELECTRICAL AND PLUMBING WORKS	ABU DHABI	3,250,000.00	25.10.95	31.08.97
47	ALLIED MEDICAL BAHRAIN EC SHADID ENGINEERING CONSULTANTS HASIB RASOOL / MIDFA MACE Co. LTD.	DIAGNOSTIC CENTRE FOR ALLIED MEDICAL BAHRAIN EC	DUBAI	2,635,000.00	26.01.96	30.11.96
48	DEPT. OF SOCIAL SERVICES & COMMERCIAL BUILDING. SOLID CONSTRUCTION CO. W.L.L. DEWAN ARCHITECTS.	COMMERCIAL BUILDING FOR AWQAF AL BAHARAN ELECTRO-MECHANICAL WORKS	ABU DHABI	3,555,000.00	03.08.96	31.01.98



10.0 OTHER PROJECT REFERENCES

SI No.	CLIENT / CONSULTANT	JOB TITLE / NATURE OF JOB	LOCATION	VALUE (AED)	STARTING DATE	COMPLETION
49	DEPARTMENT OF SOCIAL SERVICES & COMMERCIAL BUILDING. ARAB TECHNICAL CONSTRUCTION Co AL AIN CONSULTING ENGINEERS	AL MANSOURY PLAZA - COMMERCIAL BUILDING FOR MR. ALI MUBARAK SALMEIN AL MANSOURY - ELECTRICAL WORKS	ABU DHABI	2,600,000.00	09.10.96	31.05.98
50	MR. HAMD KHADEM AL GHAITH ADNAN SAFFARINI ASSOCIATED CONSTRUCTIONS & INVESTMENTS (LLC)	3 STOREY BLDG. FOR MR. HAMD KHADEM AL GHAITH - ELECTRICAL AND FIRE ALARM WORKS	DUBAI	3,800,000.00	08.04.97	30.08.99
51	H.H. Shk. AHAMED BIN HAMDAN AL NAHYAN PAULING MIDDLE EAST EST TEAM CONSULT, ABU DHABI	RESIDENTIAL VILLA FOR H.H. Shk. AHAMED BIN HAMDAN AL NAHYAN - ELECTRICAL & PLUMBING WORKS	ABU DHABI	2,000,000.00	09.06.97	31.10.98
52	THE DEPARTMENT OF SOCIAL SERVICES & COMMERCIAL BUILDINGS FOR Mr. ABDULLA HUMAID AL RUMAITHY. M/s. AL MEEDAN CONSULTANTS HACCO ENGINEERING & CONSTRUCTION CO.	COMM. BLDG FOR Mr. MOHD BIN ABDULLA HUMAID AL RUMAITHY - ELECTRICAL AND FIRE ALARM WORKS.	ABU DHABI	2,035,000.00	30.03.97	31.01.99
53	PUBLIC WORKS DEPARTMENT. AL AIN HILAL BIN BADI & PARTNERS CONTRACTINGG. CO WLL	BUILDING AND DISTRIBUTION OF SERVICES FOR STP - ELECTRO-MECHANICAL AND PLUMBING WORKS	AL AIN	480,000.00	19.07.98	31.01.98
54	H.H. SHEIKH BUTI BIN AHAMED AL OTAIBA. AL BAZ GENERAL CONTRACTING. M/S. KENNEDY & DONKINS	CONSTRUCTION OF SH. BUTI BIN AHAMED AL OTAIBA VILLA AND MAJLIS - ELECTRO-MECHANICAL WORKS	ABU DHABI	835,000.00	01.07.97	01.07.98
55	ABU DHABI MUNICIPALITY M/s. DE LEUW CATHER INTERNATIONAL LTD, ABU DHABI M/s. B M ENGINEERING AND CONSTRUCTION Co	ABU DHABI TRIP CONTRACT No. 66B - ELECTRICAL, PLUMBING, FIRE FIGHTING AND AIR CONDITIONING WORKS	ABU DHABI	5,650,000.00	18.11.97	3.03.99
56	ABU DHABI AVIATION M/s ACTCO GENERAL CONTRACTING Co. ADRENT	RE-LOCATION OF ABU DHABI AVIATION'S FACILITIES - - ELECTRICAL, PLUMBING, FIRE FIGHTING AND AIR CONDITIONING WORKS	ABU DHABI	16,050,000.00	04.09.97	31.05.00
57	NAVAL FORCE, ABU DHABI. M/s. AL AHMADIAH CONTRACTING AND TRADING	SPARE PARTS STORE AT NAVAL CAMP - MW/1755 & 1789. - ELECTRICAL WORKS	ABU DHABI	1,850,000.00	19.05.98	30.09.98
58	ABU DHABI MUNICIPALITY M/s.KEO M/s.GREGORI INT'L.	GHANTOOT POLO NEW FIELD - ELECTRICAL WORKS	ABU DHABI	2,123,000.00	08.09.98	31.12.98
59	DSSCB M/s.ARAB CONSULTANT M/s.AL MUREIKHI GENERAL CONTG.	SHOPPING CENTRE AND OFFICE BUILDING FOR MR.HAMIL BIN KHADIM AL GAITH - ELECTRICAL & FIRE ALARM WORKS	ABU DHABI	10,800,000.00	01.10.97	31.01.99
60	P W D, ABU DHABI. M/s. ARAB CONSULTANT M/s. AL OMRAN GULF ENGINEERING AND CONTRACTING Co.	VILLAGES AND ISLANDS ADMINISTRATION BLDG. FOR W.E.D. - ELECTRO-MECHANICAL WORKS.	ABU DHABI	5,550,000.00	15.11.97	09.10.00



10.0 OTHER PROJECT REFERENCES

SI No.	CLIENT / CONSULTANT	JOB TITLE / NATURE OF JOB	LOCATION	VALUE (AED)	STARTING DATE	COMPLETION
61	PWD M/s. AREX M/s.GENERAL CONTRACT ENGINEERING CO.	NEW POLICE STATION TYPE 'A' AT AL RABHA CITY - ELECTRO-MECHANICAL & PLUMBING WORKS	ABU DHABI	11,400,000.00	01.07.98	31.01.00
62	H.H. SHEIKH SULTAN BIN KHALIFA BIN ZAYED AL NAHYAN GROUP-3 ENGINEERS CONTRACTORS LLC DIWAN CONSULTANT	VILLAS AT THE PRIVATE RESIDENTIAL PALACE FOR H.H. SHEIKH SULTAN BIN KHALIFA BIN ZAYED AL NAHYAN - ELECTRO-MECHANICAL WORKS	ABU DHABI	2,706,000.00	18.09.97	31.08.00
63	TOWN PLANNING DEPT. AL AIN SEIDCO GENERAL CONTG. M/s. PARC INTERNATIONAL	VIP SUITES FOR TAWAM HOSPITAL AL AIN - ELECTRICAL & AIRCONDITIONING WORKS	AL AIN	4,100,000.00	08.02.99	28.02.00
64	H.H. SHAIKH KHALIFA BIN ZAYED PVT. OFFICE GROUP-3 ENGINEERS M/s. PLANNER INT'L	COMMERCIAL BUILDING FOR H.H. CROWN PRINCE - ELECTRICAL & FIRE ALARM WORKS	ABU DHABI	2,625,000.00	05.05.99	31.01.02
65	THE PRIVATE OFFICE OF H.H. Sh. SULTAN BIN KHALIFA BIN ZAYED AL NAHYAN DEWAN ARCHITECTS AND ENGINEERS IAN BANHAM & ASSOCIATES DHAFIR DEVELOPMENT & CONTRACTING	VILLA FOR H.H. Sh. SULTAN BIN KHALIFA BIN ZAYED AL NAHYAN - ELECTRO-MECHANICAL WORKS	ABU DHABI	5,000,000.00	24.06.95	28.02.02
66	MUNICIPALITY, DUBAI AL TADAMON AL ISKANI ARABESQUE ENG. CONSULTANT.	CONSTRUCTION OF VILLAS - ELECTRICAL WORKS	DUBAI	1,472,000.00	26.03.98	31.12.00
67	ABU DHABI MUNICIPALITY B.M. ENGINEERING & CONST. Co DE LEUW CATHER INTERNATIONAL - ABU DHABI	ABU DHABI TRIP CONTRACT No. 66C - ELECTROMECHANICAL WORKS	ABU DHABI	10,625,000.00	01.09.98	16.06.01
68	AL SHAFAR TRANSPORT & CONTRACTING Co EMARAT, DUBAI M/s. ARENCO	G+4 OFFICE COMPLEX FOR GENERAL PETROLEUM - ELECTRICAL & PLUMBING WORKS	DUBAI	10,800,000.00	05.08.99	03.01.01
69	DSSCB DEWAN CONSULTANT AYOUBCO	BLDG. FOR MR.YASSER SAEED AL OMRAN, ABUDHABI - ELECTRICAL WORKS	ABU DHABI	1,910,000.00	09.08.99	31.12.99
70	ITALCO LAYING EMIRATES	VILLA AT MAQTA BRIDGE - ELECTRO MECHANICAL & PLUMBING WORKS	ABU DHABI	2,200,000.00	01.03.00	11.08.00
71	ABU DHABI MUNICIPALITY (TOWN PLANNING) DU LEUW CATHER INTL. HILALCO	BREAK WATER DEVELOPMENT CONTRACT 987 - ELECTRICAL WORKS	ABU DHABI	2,400,000.00	08.05.00	07.05.01



10.0 OTHER PROJECT REFERENCES

SI No.	CLIENT / CONSULTANT	JOB TITLE / NATURE OF JOB	LOCATION	VALUE (AED)	STARTING DATE	COMPLETION
72	ABU DHABI WATER & ELECTRICITY AUTHORITY(ADWEA) ARCHITECTURAL & PLANING CORPORATION ARAB TECHNICAL CONSTRUCTION CO.(ARABTEC)	RENOVATION AND DECORATION OF ADWEA HEADQUARTERS BUILDING ABU DHABI - ELECTROMECHANICAL WORKS	ABU DHABI	2,710,000.00	15.07.00	15.03.02
73	UAE ARMED FORCES DIRECTORATE OF MILITARY WORKS FORCE 10 UAE LTD.	EXTERNAL WORKS FOR CAMP IN QUFFAI ISLAND - ELECTRICAL WORKS	ABU DHABI	4,800,000.00	15.08.00	15.01.01
74	P W D ABU DHABI AL SHAHAMA CONSULTANT FORCE 10 UAE LTD.	PRE-FABRICATED OFFICES & HALL AT SHARIA JUDICIAL COURT, ABU DHABI - ELECTRICAL WORKS	ABU DHABI	1,445,000.00	24.09.00	23.02.01
75	ADNOC ASTER ABU DHABI CRSS	RUWAIIS HOUSING COMPLEX EXPANSION 320 FLATS PACKAGE 3 PROJECT-1215 FOR ADNOC - ELECTRICAL WORKS	ABU DHABI	17,600,000.00	25.05.00	25.01.02
76	UAE ARMED FORCES DIRECTORATE OF MILITARY WORKS FORCE 10 UAE LTD	BUILDINGS AND REST HOUSES FOR RADAR SITES AT SIR ABU NUAIR ISLAND - ELECTRO-MECHANICAL WORKS	ABU DHABI	600,000.00	18.07.01	17.10.01
77	RACING AND EQUESTRIAN CLUB, DOHA ASCO CONSULTING ENG. GREGORI INTERNATIONAL	THE NEW HORSE TRACKS AT THE RACING AND EQUESTRIAN CLUB, AL RAYYAN, DOHA, QATAR - ELECTRICAL WORKS	QATAR	5,715,000.00	19.11.01	02.03.02
78	EMARAT, DUBAI	OPERATION & MAINT OF ELECTRO-MECHANICAL EQUIPMENT SYSTEM AT EMARAT H.O. COMPLEX TENDER TN/OPS/45/97	DUBAI	600,000.00	20.12.99	29.12.02
79	H.E. KHALAF BIN AHMED AL OTAIBA EMIRATES GENERAL CONSTRUCTION Co. SYRCONSULT	HOTEL IN SHARJAH FOR H.E. KHALAF BIN AHMED OTAIBA MILLENNIUM HOTEL - ELECTRICAL WORKS	SHARJAH	3,825,000.00	01.08.99	30.09.00
80	EUROTECH FZCO AL JASSIM ENGG.	CONSTRUCTION OF EUROTECH FACTORY IN JEBEL ALI	DUBAI	1,200,000.00	30.06.03	30.09.03
81	BATEAUX DUBAI SEINE DESIGN	PASSENGERS RESTAURANT VESSEL FOR THE CREEK OF DUBAI - ELECTRO-MECHANICAL WORKS	DUBAI	2,233,000.00	22.03.03	15.11.03
82	GHQ, ABU DHABI EASTERN LTD	EC 756 - COMPLETE ELECTRICAL WORKS	ABU DHABI	10,294,000.00	1987	1988
83	GHQ, ABU DHABI THOMSON CSF	UM AL NAR SECURITY SYSTEM	ABU DHABI	4,774,000.00	1988	1989
84	GHQ, ABU DHABI THOMSON CSF	UM AL NAR SECURITY SYSTEM, INPLANT CCTV	ABU DHABI	497,000.00	1988	1989
85	N.C.C. / ABU DHABI	ELECTRICAL WORKS - TOTAL ABK	ABU DHABI	114,000.00	1983	1984



10.0 OTHER PROJECT REFERENCES

SI No.	CLIENT / CONSULTANT	JOB TITLE / NATURE OF JOB	LOCATION	VALUE (AED)	STARTING DATE	COMPLETION
86	N.C.C. / ARABVAN	P.S.D. 29 CARAVANS - ELE. WORKS	ABU DHABI	224,000.00	1983	1984
87	N.C.C. / ARABVAN	YEMEN HUNT OIL CAMP - ELE. WORKS	ABU DHABI	249,000.00	1983	1984
88	TRANSITREX	MEP WORKS - MECHANICAL WORKSHOP EXTENSION	DUBAI	746,000.00	1986	1987
89	SCHLUMBERGER J.M. REGNAULT & PARTNERS	VARIOUS LOCATIONS IN UAE (JEBEL ALI, DUBAI, ABU DHABI)	U.A.E.	1,616,000.00	1985	1991
90	SCHLUMBERGER OVERSEAS J.M. REGNAULT & PARTNERS	VARIOUS LOCATIONS (ALGERIA, SYRIA, QATAR, INDIA, OMAN, EGYPT - ELECTRO-MECHANICAL WORKS	Various Locations	14,019,000.00	1985	1991
91	DOWELL SCHLUMBERGER	DOWELL WORKSHOP, DEIR EZ ZOR	SYRIA	749,000.00	1986	1987
92	O A T T DOWELL SCHLUMBERGER	WORKSHOP IN AMENAS	ALGERIA	1,343,000.00	1986	1987
93	J.M. REGNAULT & PARTNERS	DOWELL WORKSHOP, JEBEL ALI BASE	DUBAI	368,000.00	1986	1987
94	TRANSITREX J.M. REGNAULT & PARTNERS	BONDED WAREHOUSE / PAJA - COMPLETE ELECT. WORKS	DUBAI	746,000.00	1986	1987
95	PUBLIC WORKS DEPT. ABU DHABI HALCROW CONSULTANT ARAB CONTRACTORS CO. ABU DHABI	MINA MUSSAFAH - ELECTROMECHANICAL WORKS	MINA MUSSAFAH, ABU DHABI	17,140,000.00	10/29/2000	5/30/2002
96	SH.SULTAN BIN ZAYED AL NAHYAN CRANKE & BOKE CONSULTANT AL MUREIKHI GENERAL CONTRACTING EST	COMM. BLDG. FOR H.H.SH.SULTAN BIN ZAYED AL NAHYAN - ELECTRICAL WORKS	ABU DHABI	5,750,000.00	4/20/2001	10/31/2002
97	ABU DHABI MUNICIPALITY DE LUEW CATHER INTERNATIONAL AL MUREIKHI GENERAL CONTRACTING EST.	PARKING STRUCTURE, SECTOR E3 (PE3) - ELECTROMECHANICAL WORKS	ABU DHABI	6,500,000.00	4/20/2001	2/28/2003
98	DUBAI MUNICIPALITY GULF PRECAST Co. LLC	DUBAI VILLAS - ELECTRICAL AND PLUMBING WORKS	DUBAI	1,492,800.00	8/30/2002	7/31/2001
99	GENERAL INDUSTRIAL CORPORATION W.S. ATKINS GULF CONTRACTORS CO.	ABU DHABI INDUSTRIAL CITY - MUSSAFAH PLOT M-41 CONTRACT 2B - ELECTRO-MECHANICAL WORKS	ABU DHABI	17,000,000.00	4/1/2001	3/31/2003
100	DIRECTORATE OF MILITARY WORKS, ABU DHABI FORCE 10 UAE LTD.	CONSTRUCTION OF 50 VILLAS AND OTHER FACILITIES IN RAS GHUMAIS. - MEP WORKS.	ABU DHABI	4,500,000.00	6/25/2003	12/31/2003
101	FIRST GULF BANK W.S. ATKINS GROUP-3	VILLA COMPOUND (30 VILLAS) IN MURROOR ON PLOT No. 57, SECTOR 29, ABU DHABI. - MEP WORKS	ABU DHABI	5,300,000.00	7/15/2003	4/10/2004



10.0 OTHER PROJECT REFERENCES

SI No.	CLIENT / CONSULTANT	JOB TITLE / NATURE OF JOB	LOCATION	VALUE (AED)	STARTING DATE	COMPLETION
102	BOARD OF GOVERNORS - AL KHUBAIRAT COMMUNITY SCHOOL GIBB LTD AL MUREIKHI GENERAL CONTRACTING EST.	THE BRITISH SCHOOL AL KHUBAIRAT DEVELOPMENT PHASE-3 - MEP WORKS	ABU DHABI	6,400,000.00	4/30/2003	1/15/2004
103	BA TEAUX PARISIENS SEINE DESIGN	BOARDING BARGE FOR BA TEAUX PARISIENS - ELECTRICAL WORKS	DUBAI	400,000.00	1/10/2004	4/10/2004
104	AL GAITH HOLDING NATIONAL ENGINEERING BUREAU	DALMA TOWER (B+G+40) RESIDENTIAL BUILDING - MEP WORKS	DUBAI	130,000,000.00	25/02/2004	30/12/2007
105	H.H.SH. SUROOR Ms.A C G CONSULTANT	ROTANA BEACH RSORT & CHALET - MEP WORKS	FUJAIRAH	38,000,000.00	05/01/2004	31/12/2006
106	ARAB BANK FOR INVESTMENT & FOREIGN TRADE Ms.HEGAZY ENGINEERING CONSULTANT.	ARBIFT BANK - MEP WORKS	SHARJAH	15,700,000.00	07/05/2006	30/12/2007
107	EMMAR PROPERTIES Ms.ALLIED CONSULTANTS LTD.	BURJ TOWER, OLD TOWN RESIDENTIAL. - MEP WORKS	DUBAI	180,000,000.00	15/05/2005	11/ 12/ 2006
108	DUBAI TOURISM AND DEVELOPMENT CO. Ms.WS ATKINS & PARTNERS OVERSEAS Ms.ARABTEC	DUBAI LAND - MEP WORKS	DUBAI	5,560,000.00	20/03/2005	31/ 5/ 2006
109	Ms.ARKONSULT Ms.AL MERAIKHI GENERAL CONTRACTING	ABU DHABI UNIVERSITY - MEP WORKS	ABU DHABI	24,000,000.00	04/03/2006	30/01/2008
110	HYDER MIDDLE EAST BOUYGUES / TARGET - JV	RITZ CARLTON HOTEL, DUBAI - MEP WORKS	DUBAI	188,500,000.00	5/2/2007	31/7/2011