



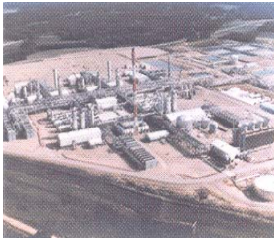
---

COMPANY PROFILE  
SWITCHGEAR MANUFACTURING DIVISION

---



**Energy**



**Industry**



**Residential**



**Infrastructure**





## CONTENTS

- 1.0 About Switchgear Manufacturing**
- 2.0 Organization Chart**
- 3.0 Quality Plan**
- 4.0 Products**
- 5.0 Sales and Marketing**
- 6.0 Contact Us**
- 7.0 Design**
- 8.0 Materials**
- 9.0 Manufacturing / Assembling**
- 10.0 Factory Inspection and Testing**
- 11.0 QHSE Inspection / After Sales**
- 12.0 Installation, Testing and Commissioning**
- 13.0 Technical Assistance**
- 14.0 Warranty and Spare Parts Capability**
- 15.0 Standards**
- 16.0 Franchised Panel Builder Certificate**
- 17.0 QHSE Certificate**
- 18.0 Type Test Certificate**
- 19.0 Factory Final Inspection Certificate**
- 20.0 Installation, Testing and Commissioning Certificate**



---

## CONTENTS

---

- 21.0 Areas of Concern**
- 22.0 Major Projects Executed**
- 23.0 Some Major References**
- 24.0 Major Clients**





## 1.0 ABOUT SWITCHGEAR MANUFACTURING DIVISION

Verger et Delporte UAE Ltd has been operating in UAE since 1977 and have developed extensive experience in the field of Low Voltage Switchgear. Our factory is in Sharjah and manufactures wide range of Low Voltage Switchgear products in this facility under franchising agreement with Schneider Electric. Said product are listed in the PRODUCTS section of the website.

We adhere to the highest standards of corporate governance by establishing processes and practices that promote and ensure integrity, compliance and accountability.

Verger et Delporte UAE Ltd is committed to environment, health and safety excellence. We believe in good corporate environmental citizenship in the communities in which we operate and in providing a healthy and safe work place. We committed to complying with all environmental, health and safety laws and regulations.

Our products are sold throughout the UAE via network of sales offices in Northern Emirates, Dubai, Abu Dhabi and Doha Qatar. We have supplied thousands of panels of Low Voltage switchgear to customers for applications as diverse as Power Stations, Oil and Gas, Utilities, Hospitals, Private Industries, Airport and Shopping Centres.

We have a state-of-the-art low voltage switchgear manufacturing facility in SHARJAH spread over 20,000 square feet. The facility is equipped with sophisticated machines for computer aided design and manufacturing, assembling and testing.

Our high-tech design office is capable to design the client's requirement by strictly adopting the BS, IEC standards and Local Regulations. We are constantly updating and improving our products through advances both in terms of quality and design in line with latest product standards with the technical support from our franchiser. We extend our after sales service to the customer through well trained service team.



## 1.0 ABOUT SWITCHGEAR MANUFACTURING DIVISION

Verger et Delporte UAE Ltd. ,an ISO 9001, ISO 14001 and OHSAS 18001 certified company and a franchised panel builder of Schneider Electric, in the services of Low Voltage Switch Gear panel building, testing & commissioning and after sales activities for three decades are committed to make every possible endeavor to follow up the development witnessed by the Industry and to contribute effectively in supporting this progress.

We always exert efforts to adhere ourselves to the most modern scientific means with the aim of enhancing our competitive ability and meeting the goals set ourselves in terms of quality, functionality and safety.

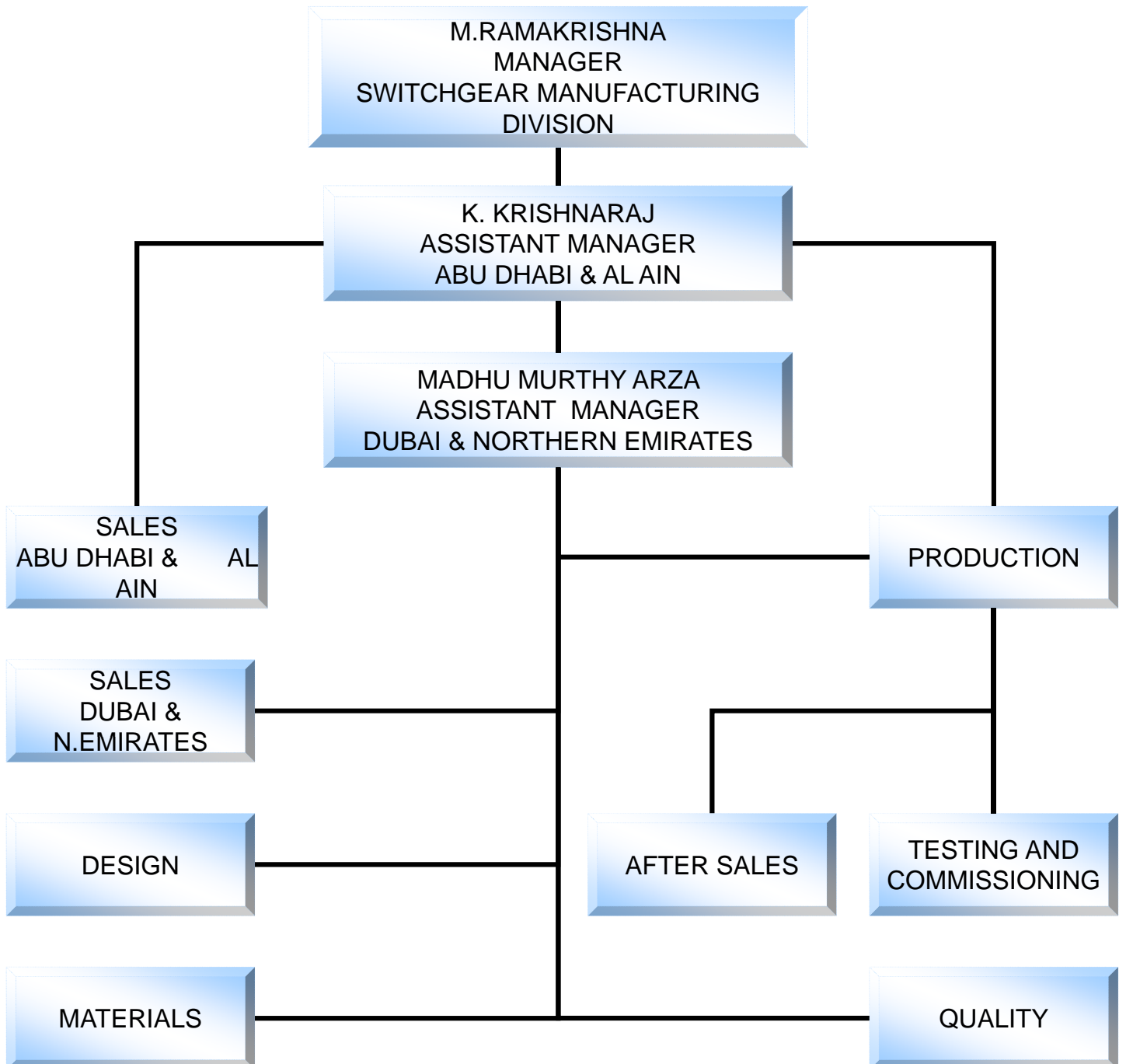
We fully understand and exceed our customers' needs, wants and preferences and provide greater value to our customers than our competition.

Our team work and culture build on the company's reputation and image internally and externally while driving initiatives to ensure Verger et Delporte U.A.E. LTD. remains as employer of choice. We implement best-in-class operating practices and leverage company wide opportunities and best practices.

With the experience, standard reached by us and our efficient team, we offer outstanding services of high quality. We have strategies concentrating on all issues and difficulties and establish in a manner that contribute in enhancing and supporting permanent cooperation with our Customers satisfying their increasing needs.



## 2.0 ORGANIZATION CHART





## 2.0 ORGANIZATION CHART

Assembling low voltage switchgear of all kinds under the franchise of Schneider Electric, the division profits by the integrated process of panel building, stretching from the Design (Electrical Calculation and Configuration Lay out) up to the Manufacture, Delivery and After-Sales Service of finished products.

With a concern to stick closer to client's demand, the company has opened branches in *Dubai & Northern Emirates* and *Abu-Dhabi* (Asst. manager outpost) apart from its *Sharjah* head office.

This division's activities are shared out among 7 Sections, which are the Marketing / Sales, Design Office, Materials, Production, Quality Control, Testing & Commissioning and After-Sales Service.

In order to ensure a smooth continuity in the division's operational management, two Assistant managers are duly authorized to deputize for the manager, take temporarily over the latter's duties for clearly defined regions (Dubai & Northern Emirates or Abu Dhabi) during his absence.



### 3.0 QUALITY PLAN

Main distribution board, Motor control centre- Fixed / Draw-out, Intelligent motor control centre, Sub-main distribution boards, Final distribution boards, Automatic power factor correction panels, Source changeover system-Manual/Automatic, Load management and synchronizing panels, Energy meter cabinets, Lighting control panels and Starter panels.

Internal organization in business key-processes to meet Project's Quality requirements.

#### 1. Offer / Contract review:

Prior to the acknowledgment of order, under the responsibility of SGD Manager / Asst. Manager (SGD-Qatar):

- To check that VD offers meet client's contractual requirements in all respects
- To make sure the agreed technical solution / scope of works remain within our capacity.

#### 2. Project programming:

Under the direction of SGD Manager / Asst. Manager (SGD-Qatar), to plan adequately the tasks and their related human and material/equipment resources as per contractual date of delivery:

- Design, Material selection, with optimal time margin for customers' approval.
- Material procurement and execution.
- Final inspection, testing and commissioning.

#### 3. Design and Materials:

Under the checking of Design Engineer and control of SGD Manager/Asst. Manager (SGD-Qatar):



### 3.0 QUALITY PLAN

- To carry out the electrical design in terms of power / control diagrams followed by general arrangements (taking heed of the environmental constraints as well as electromechanical interfaces with the use and power generation) on software, home-developed for our specific activities.
- The thoroughly reviewed and approved “design output” depends on initial control of the “design input” (Specifications, technical guides from franchiser, International & local standards, tailor- made software).

#### 4. **Material Control:** *(Refer to GP6 – Purchasing and Material Control Procedure)*

- a). Selection – Under the responsibility of competent personnel:  
To pick up from clients suggestions or / and VD list of approved suppliers (Quality, Health, Safety and Environmental performance-rated by senior responsible and QHSE Manager) the right materials, complying with the specifications and applicable quality standards.
- b). Purchasing:  
To place the corresponding comprehensive order, thoroughly reviewed and approved by SGD Manager.
- c). Incoming Goods Inspection:  
Under the responsibility of Logistics Manager / Store Keeper (Qatar) to check material compliance with the specified requirements, from optimally defined scrutiny.

Remarks: The major materials are 100% controlled by the franchiser or / and approved supplier, with available certificates of conformity to IEC or BS standards.



### 3.0 QUALITY PLAN

#### 5. **Production:** (Refer to HSIM 6301 & WI 3200 – 3209)

Under the responsibility of Production Supervisor:

From the Production file, to manufacture the panels in accordance with customer requirements (drawings), Switchgear Assembly and Installation Guide (from our franchiser), while auto-controlling the operations on the corresponding format.

#### 6. **Inspection & Testing:**

Carried out by Quality Inspector or / and Assistant:

Before any eventual client's inspection visit for panels reception, Quality Inspector, duly authorized by SGD Manager, performs the corresponding Quality Control of the panels, logging his results, recording his eventual comments and approval for the panels delivery on the corresponding formats.

#### 7. **Maintenance, Servicing & After Sales:**

Under the responsibility of SGD Manager / Asst. Manager (SGD-Qatar):

- To carry out the required site intervention, after technical expertise of Quality Inspector or /and Assistant.
- To provide spare parts and components for one-year period, with ten years guaranteed availability of stock by our franchiser (Whenever available).

#### 8. **Project's Documents control:** (Refer to GP1 – General Documents Control)

Under the shared responsibility of different sections head:

- To record, file, update, withdraw, and supersede the job-related documents, when necessary, as per their relevance and importance with regard to quality requirements.
- To make information easy to retrieve, using electronic (diskettes, hard-disks) or paper support, where applicable.



### 3.0 QUALITY PLAN

*Related Process: MP3 – Switchgear Division Management Process*

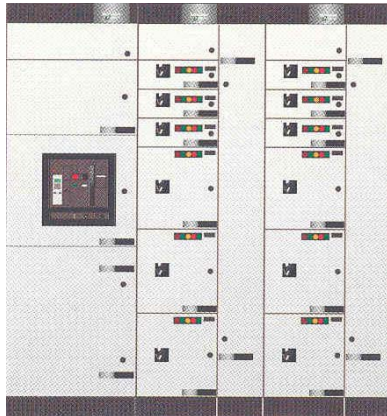
With its *Integrated Management System Documentation (IMSD)*, the company benefits also from well-thought management processes and functional procedures, making our organization, if not flawless, at least quick-responding to any challenging quality issues. The personnel, whose competence and skills are under permanent watch (*GP5 – Training Procedure*), can cope confidently with potential or actual anomalies (*GP2 – Non-conformity Procedure*), or general issue handling, with (*GP3 – Corrective and Preventive actions Procedure*).

Furthermore the whole practices related to business key-processes, which affect the delivered quality, are regularly inspected and drift from the optimally defined proceeding, conform to ISO 9001:2008, ISO 14001:2004 and OHSAS 18001:2007 requirements (*GP4 – Internal QHSE Audit Procedure*).

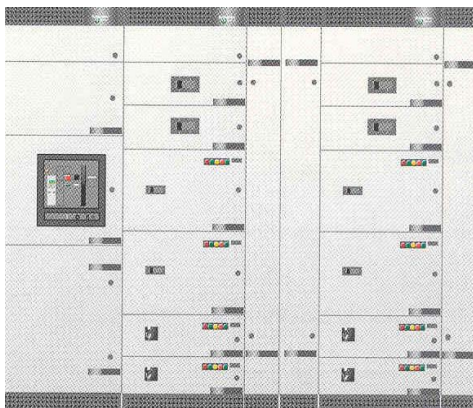
Customer oriented QHSE policy, driving force behind the major decisions and actions of senior management has led the company to monitor its quality performance against tough targets of business excellence (*GP8 – Indexes and Indicators Procedure*).



## 4.0 PRODUCTS



Drawout Construction



Fixed Construction



6300A Switchboard

The division proposes a wide selection of low voltage switchgear, either declined from our principals standard list or from other reputed manufacturers, then locally customized under strict control and acceptance of Schneider Electric's Quality Department or house developed in accordance with the applicable electrical standards and regulations.

- Main Distribution Boards
- Motor control Centres  
(Fixed / Drawout)
- Intelligent Motor control Centres  
(Fixed / Drawout)
- Sub-Main Distribution Boards
- Final Distribution Boards
- Automatic Power Factor Correction  
Capacitor Panels
- Source Changeover System  
(Manual / Automatic)
- Generator Control,  
Load Management and  
Synchronizing Panels
- Energy Meter Cabinets
- Feeder Pillars
- Lighting Control Panels
- Starter Panels



## 5.0 SALES & MARKETING

This department is strategically built-up to cover the complete emirates market geographically divided between the sales Managers under the ultimate co-ordination of the Division Manager.

- Abu Dhabi based post to cover Abu Dhabi and Al Ain
- Sharjah based post to cover Dubai and Northern Emirates

A team of people with good educational background and sound experiences makes up the mandatory condition to furnish proficiently these duties with customer satisfaction as motive. The customers / clients are efficiently guided to communicate his practical expectations . While confidence in our products built-up from the primitive stages of discussions, the sales engineers are associated with the customers right from the sourcing of enquiry to after sales service.

The techno-commercial clear offer comes out as per the explicit requirement of client / consultant while meeting the local regulations. Customized solutions from our range of products will be provided to the customer within the guidelines of the principals.

A team of qualified and well experienced people render their services in estimation by handling Qualitative and Quantitative major tendering works well with in the given target dates



## 6.0 CONTACT US

### Head Office - Sharjah

#### **M. Ramakrishna**

P.O. BOX 5629 Sharjah,

United Arab Emirates

Tel : +971 6 543 2436

Fax : +971 6 543 4139

Mobile: +971 50 631 40 57

E-mail : ramakrishna@verger-delporte.ae

### Dubai and Northern Emirates

#### **Madhu Murthy Arza**

P.O. BOX 5629 Sharjah,

United Arab Emirates

Tel : +971 6 5432 436

Fax : +971 6 5434 139

Mobile: +971 50 4620 874

E-mail : madhu@verger-delporte.ae

### Abu Dhabi and Al Ain

#### **K. Krishnaraj**

P.O. BOX 47010, Abu Dhabi,

United Arab Emirates

Tel : +971 2 672 73 17

Fax : +971 2 679 35 77

Mobile: +971 50 797 15 56

E-mail : krishnaraj@verger-delporte.ae

**With more than 250 dedicated employees at your service ...**



## 7.0 DESIGN

The in-house design office structured with an engineering team of Design Engineers assisted by designers, capable to design the market requirements strictly according to local regulations, I.E.C and other International / National Standards. It is equipped with all records of technical documents provided by our principals and by other suppliers, catalogues, manuals, product qualification & conformity certificates and complete latest international standards for ready reference. Also requirements of customer's justifications towards design aspects can be fulfilled with our principal's guidelines or through worked out calculations.

Total design system is accommodated with local computer network system and also linked with external offices to extend highest service. Engineering drawings are prepared with the latest AUTO CAD and EPLAN software. They are standardized with self developed libraries according to the local regulations, system requirements and principals regulations.





## 7.0 DESIGN

The marketing / sales, design office, materials control and production sections are all equipped with the state of the art available technology and networked at all levels to facilitate communication which helps us in effective time management.

A team of well experienced engineers assist the division in the use of customized programs developed by verger et Delporte UAE ltd based on our principal M/s Schneider electric technical guides & Technical know how, International standards, National standards and local regulations, besides standard office automation and latest operating systems.

These software make up as a useful tool to optimize the technical solution offered to the customer. From environmental and electrical constraints they help to bring-out the very best definition of the panels in a record time. They include (non limitative features) calculation and design of power and control circuits, selection of components outlay of external and internal configuration.

Materials and production planning are also done through the computerized network which resulted in a better material management and inventory of the stocks available.

As a result of total computerization we borne the fruit of reduced man hours and increased output.



## 8.0 MATERIALS

We are keeping more than 8000 materials reference worth of Dhs.20 Million. The material section comprises of a well competent Material Co-ordinator and material assistants. The entire material section is fully computerized with common network so that the management monitoring of the material procurement, allocation, safety stock and order processes is easily carried out from the desktop.

The materials are selected based on our standard Design Manual, our principal recommendation and also Client requirements and by adopting the International, National standards and Local regulations. The Bill of Material is prepared based on the job requirement, subsequently the purchase order also prepared and it's reviewed by the division manager for approval.

In order to keep our quality we have a special team for checking the incoming goods. As per the standard procedure, the Non-Conformance is raised to the supplier if any materials are found as faulty. The major materials are 100% approved by the franchisee or approved supplier with available certificates of conformity to International, National standards and Local regulations.



## 9.0 MANUFACTURING / ASSEMBLING

The Production premises is made up of two shop floor areas of 2000 sq. meters (each of 1000 sq. meter area). Besides a storage capacity of 900 sq. meter area with 8000 material references worth of Dhs. 20 million.

The production team comprises a supervisor and a group of team leaders under whom a batch of trained and well experienced technicians put their combined efforts to bring out the best in quality products of various L.V. switchgear panels and control panels etc.. In all above three levels their work-in-progress is documented through auto-control sheets.

The factory is completely equipped with manual bending machines, hydraulic bending machines for bus bar shaping, punching machines for drilling, shearing and bending machines, free standing drilling machines for fabrication, besides miscellaneous equipments such as drilling machines, saw cutters, heat gun for basic operations. this machinery and equipments are carefully controlled on periodical basis so as to ensure a consistency in the performed operations (corrective and preventive actions are recorded).

Critical assembly tasks are subject to a thorough checking of the hand-equipment. Crimping, cutting, stripping tools as well as torque wrenches are internally verified with logged results for traceability purposes and certification is done by certified laboratories in addition to internal calibration.

As a part of the every day schedule, production, material, co-ordination and design people meets to discuss the progress of jobs and planning for new ones.

In addition to the above the shop floor is upgraded to contemporary equipments & tools from time to time to meet the rapid growing technology.



## 10.0 FACTORY INSPECTION AND TESTING

At the end of the manufacturing process, a LV Switch Gear assembly must undergo various individual inspections and tests at the factory, following an established programme.

The switchboard must comply with:

- The appropriate Standards
- The design files (Drawings, diagrams and specific requirements).
- Manufacturer's Installation guide
- In-house standards
- Local regulations

Test must be carried out in a clearly defined area and in compliance with applicable regulations, by qualified personnel. Test area must be cordoned-off using warning chain or rope and warning sign.

Inspectors must be a qualified personnel, must have attended and passed a special training course. They must be qualified for working in the proximity of live parts.

The necessary tools should be correctly and periodically calibrated and maintained in good working conditions. Some of the necessary tools are:

- Control console (equipped with different control voltage source facilities)
- High voltage Test Kit
- Insulation Resistance Tester
- Multimeter
- Primary Current Injection Test Kit
- ACB/MCCB test kit (Secondary)
- Torque wrench
- ELCB/ELR Test Kit
- Low Resistance Test Kit.
- 3 $\phi$  Variac



## 10.0 FACTORY INSPECTION AND TESTING

Routine tests are intended to detect faults in materials and workmanship. Tests are carried out on every new assembly after it has been assembled or on each transport unit. Hence repetition of routine tests at the place of installation is not required.

Assemblies, which are assembled using standardized components outside the works of the manufacturer and assemblies, by the exclusive use of parts and accessories specified or supplied by the manufacturer for this purpose, shall be routine-tested by the firm which is going to assemble



## 11.0 QHSE INSPECTION / AFTER SALES

- The duties are carried out by proficient personnel, whose skills are regularly updated by Schneider Electric's quality technical experts.
- It is made up of :
  - 1) QHSE Manager
  - 2) Quality Control Responsible.
  - 3) Strictly selected quality conscious technicians from production.
  - 4) Audit from Schneider Electric.
  - 5) Audit from external parties (BV, Consultants, Clients, etc.)
- The quality inspection procedure ranges from correctness of the component ratings up to compliance to the international, national standards & local regulations. Apart from the above standard routine tests are carried out by quality personnel only. The testing equipment provide for all low voltage testing needs. Functional tests are also done.
- The test equipment are calibrated by certified laboratories while being thoroughly checked internally, on regular intervals (Results logged and filed accordingly).



## 12.0 INSTALLATION, TESTING AND COMMISSIONING

When contractually requested, the installation, testing and commissioning team carries out the tasks and gives our customers their experts solutions, under the strict supervision of their Engineers / Authorized personnel.

By considering the importance of Testing and Commissioning we upgrade all testing equipments as per latest technology and are calibrated by certified laboratories while being thoroughly checked internally on regular intervals (Results are logged for future reference).

Beyond the standard tests, our experts do other optional tests viz. Low Resistance test, Primary injection test, Secondary injection test, etc. based on the agreement.

Infrared Thermography is an ideal technique for inspecting electrical equipment for defective components or connections. We have a team of well trained and certified engineers to conduct these tests.



## 13.0 TECHNICAL ASSISTANCE

It consists of :

- External training from Schneider electric for responsible personnel in the organization to embrace a general or specific view, as per the needs of the latest technology / products / operational skills.
- Internal training in the form of seminars, workshops, hands-on courses on products, software, shop floor practices, quality inspection.
- Expertise and technical support for outstanding job or product issues.
- On request from our clients we provide training on low voltage switchboards in both classroom as well as “on site” (practical) in to their site.
- Our integral training course is for 3days and it covers, Sales & Design office, Production & Quality, Ecodial software for load flow studies.



## 14.0 WARRANTY & SPARES PARTS CAPABILITY

The company gives a 1 year warranty to the switchgear against any manufacturing defects.

The stock is procured with 8000 references with a safety level of 2 to 3 months for moving items. This enables us to provide a speedy service to our customers.

The stock level of every item is maintained by an ERP Integrated Solution and all of our employees are well trained in this.



## 15.0 STANDARDS

The division adapts to the reliable technology of manufacturer and it's standards to provide the state of the art design to the requirements of the Local Authorities and End users

The factory built assemblies are as per the Totally type Tested Assemblies from ASTA/ASEFA/KEMA certified, which conform to IEC & BSEN international standards. Type tested assemblies are certified for 85KA for 1 Sec. / 50KA for 3 Sec, which are proposed at the Main Distribution level as required. For Sub-Main Distribution level Assemblies are certified for 50KA/42KA/35/25KA for 1 Sec. Also for final distribution level, assemblies are certified for 17KA for 0.5Sec and as required.

Four routine tests are carried out at the premises, as a result of which, it provides evidence of the company's ability to produce international / national standards locally.

Conformity to standards are as follows:

- Factory Built Assemblies – IEC 60439-1 / IEC 61439-1
- Resistance to Damp Heat – IEC 68-2-30
- Resistance to Salt Mist – IEC 68-2-11
- Internal Arc Confinement – AS 3439
- Earth Quakes – CBC (California Building Code)

Our goods are guaranteed with a warranty period of 18 months from the date of delivery or 12 months from the date of commissioning, whichever comes earlier against any defects in construction or operation arising from faulty design, materials or workmanship.



## 16.0 FRANCHISED PANEL BUILDER CERTIFICATES

We can proudly say that we are the only panel builder doing as a Franchiser since 1977 for Schneider Electric in U.A.E. Main low voltage switch board rated up to 6300Amps are designed and assembled by VERGER et DELPORTE UAE LTD. using BLOKSET system under licensing agreement with Schneider Electric and in accordance to their design guide lines and technical recommendations. The lists of the certificates are;

1. Certified as Franchised panel builder for Blokset system till 31St March 2012.
2. Certified as Franchised panel builder for Prisma TT and Blokset system till 31St March 2011.
3. Certified as Franchised panel builder for Prisma TT and Blokset system till 31st March 2010.
4. Certified as Franchised panel builder for Prisma plus and Blokset systems till 31st March 2009
5. Certified as Franchised panel builder for Prisma plus and Blokset systems till 31st March 2008
6. Certified as Franchised panel builder for Prisma plus and Blokset systems till 31st March 2007
7. Certified as Franchised panel builder for Prisma and Blokset systems till 31st March 2006
8. Certified as Franchised panel builder for Blokset system up to 6300A till 31st December 2004
9. Certified as Franchised panel builder for Prisma system up to 4000A till 31st December 2004



## 16.0 FRANCHISED PANEL BUILDER CERTIFICATES

10. Certified as Franchised panel builder for Prisma Switchboard systems till 2002
11. Certified as Franchised panel builder for Prisma, Master block & TDI Motor Control Centre systems in the year 15th January 1997
12. Certified as Franchised panel builder for MASTER BLOCK types MB100, MB200 and MB400 systems in the year 1993
13. Certified as Franchised panel builder for low voltage switch gear assembling in the year 1991
14. Franchising contract was made in 1977 for low voltage switch gear assembling



## 17.0 QHSE CERTIFICATES

We always believe that Quality Excellence is inseparable with Health, Safety and Protection and it is for this reason we decided to have an Integrated Management System (IMS – ISO 9001, ISO 14001 and OHSAS 18001). By having IMS, we are continually proving our deepest concern not only in satisfying our customer's needs but also to protect the health and safety of our personnel, customers, any interested parties, materials/equipments as well as the environment where we work and live.

With the continued dedication and commitment towards QHSE, we have been recommended for Environmental re-certification against ISO 9001:2008, ISO 14001:2004 and OHSAS 18001:2007 in May 2009.

1. ISO 9001:2008 for Quality
2. ISO 14001:2004 for Environment
3. OHSAS 18001:2007 for Health and Safety



## 18.0 TYPE TEST CERTIFICATES

SL.No.	DESIGNATION	CERTIFICATE No.	CERTIFIED BY
1	CAMGRO SYSTEM - 1000A MAIN DISTRIBUTION BOARD / MCC – IP54	002a-11BT	ASEFA
2	CAMGRO SYSTEM - 1600A MAIN DISTRIBUTION BOARD / MCC –IP 54	003a-11BT	ASEFA
3	CAMGRO SYSTEM - 2500A MAIN DISTRIBUTION BOARD / MCC –IP 54	004a-11BT	ASEFA
4	CAMGRO F1 SYSTEM – 125A SPLIT TYPE FINAL DISTRIBUTION BOARD	2137902-100	DEKRA
5	CAMGRO F2 SYSTEM – 250A FINAL DISTRIBUTION BOARD	2137902-101	DEKRA
6	CAMGRO S1 SYSTEM – 250A SUB MAIN DISTRIBUTION BOARD	2137902-102	DEKRA
7	CAMGRO S2 SYSTEM – 400A SUB MAIN DISTRIBUTION BOARD	2137902-103	DEKRA
8	CAMGRO S3 SYSTEM – 630A SUB MAIN DISTRIBUTION BOARD	2137902-104	DEKRA
9	CAMGRO S4 SYSTEM – 800A SUB MAIN DISTRIBUTION BOARD	2137902-105	DEKRA
10	1000A EUROFORM SWITCH BOARD	18107	ASTA

*\*copies available on request*



## 18.0 TYPE TEST CERTIFICATES

SL.No.	DESIGNATION	CERTIFICATE No.	CERTIFIED BY
11	1600A EUROFORM SWITCH BOARD	18105	ASTA
12	2500A EUROFORM SWITCH BOARD	18103	ASTA
13	4000A EUROFORM SWITCH BOARD	18101	ASTA
14	630A Sub Main Distribution Board Type: Switchboard-1S	15240	ASTA
15	630A Sub Main Distribution Board Type: Switchboard-3Sa	15241	ASTA
16	2500A Main Distribution Board Type: Prisma-P Switchboard	11390	ASTA
17	1600A Main Distribution Board Type: P7 Switchboard	11201	ASTA
18	1000A Main Distribution Board Type: Euroform Switchboard	17479	ASTA
19	1600A Main Distribution Board Type: Euroform Switchboard	17475	ASTA
20	2500A Main Distribution Board Type: Euroform Switchboard	17473	ASTA

*\*copies available on request*



## 18.0 TYPE TEST CERTIFICATES

SL.No.	DESIGNATION	CERTIFICATE No.	CERTIFIED BY
21	4000A Main Distribution Board Type: Euro form Switchboard	17477	ASTA
22	Certificate of Internal Arcing Type: Euro form Switchboard	17482	ASTA
23	1000A Main Distribution Board Type: Blokset type 132 EUR04 / NW10 / IP31	075-05BT	ASEFA
24	1600A Main Distribution Board Type: Blokset type 132 EUR03 / NW20 / IP31	059-05BT	ASEFA
25	2500A Main Distribution Board Type: Blokset type 132 EUR02 / NW32 / IP31	027-05BT	ASEFA
26	3200A Main Distribution Board Type: Blokset type 132 EUR01 / NW40 / IP31	043-05BT	ASEFA
27	6300A Main Distribution Board Type: Blokset type 132 EUR06 / NW63 / IP31	091-05BT	ASEFA
28	1000A Main Distribution Board Type: Blokset type 132 EUR04 / NW10 / IP54	083-05BT	ASEFA
29	1600A Main Distribution Board Type: Blokset type 132 EUR03 / NW20 / IP54	067-05BT	ASEFA
30	2500A Main Distribution Board Type: Blokset type 132 EUR02 / NW32 / IP54	035-05BT	ASEFA

*\*copies available on request*



## 18.0 TYPE TEST CERTIFICATES

SL.No.	DESIGNATION	CERTIFICATE No.	CERTIFIED BY
31	3200A Main Distribution Board Type: Blokset type 132 EUR01 / NW40 / IP54	051-05BT	ASEFA
32	6300A Main Distribution Board Type: Blokset type 132 EUR06 / NW63 / IP54	099-05BT	ASEFA
33	Certificate of Internal Arcing Type: BLOKSET type 132	018a-08BT	ASEFA
34	630A Sub Main Distribution Board Type: Gigapan G606354X	2116708.107	KEMA
35	400A Sub Main Distribution Board Type: Gigapan G4083554	2116708.108	KEMA
36	250A Sub Main Distribution Board Type: Gigapan G2063554	2116708.109	KEMA
37	630A Sub Main Distribution Board Type: Gigapan G610254X	2116708.110	KEMA
38	400A Sub Main Distribution Board Type: Gigapan G4062554	2116708.111	KEMA
39	250A Sub Main Distribution Board Type: Gigapan G204254X	2116708.112	KEMA
40	160A Distribution Board Type: Micropan split type	2116708.113	KEMA

*\*copies available on request*



## 19.0 FACTORY FINAL INSPECTION CERTIFICATES

At the end of manufacturing process, a LV Switchgear must undergo various individual inspections and tests as per IEC 61439-1

A well experienced and trained competent technicians carry out these testing activities. They are qualified for working in the proximity of live parts. The necessary tools and equipment are correctly and periodically calibrated by certifying authority.

1. 6.11 Final Factory Inspection Report
2. 6.12 Final Factory Inspection Certificate



## 20.0 INSTALLATION, TESTING AND COMMISSIONING CERTIFICATES

By considering the importance of testing and commissioning of low voltage switchboards we upgrade all testing equipments and certificates. The testing and commissioning certificates are:

1. 1.16 Installation Inspection Report
2. 1.17 Installation Inspection Certificate
3. 2.13 Commissioning Report
4. 2.14 Testing and Commissioning Certificate



## 21.0 AREAS OF CONCERN



Energy



Industry



Residential



Infrastructure



## 22.0 MAJOR PROJECTS EXECUTED

SL.No.	CLIENT	CONSULTANT	PROJECT	PRODUCT	VALUE
1	BURJUMAN CENTRE (L.L.C)	DAR AL HANDSAH SHAIR AND PARTNERS	THE NATIONAL CO. (KHARAFI NATIONAL)	MDB,SMDB, MCC, DB, CAP.PANEL&METER CABINET	11,000,000.00
2	EMIRATES	ADPI	EMIRATES NEW ENGINEERING CENTRE	MDB,SMDB,MCC,CAP.PANEL & DB	9,500,000.00
3	GASCO	ARENCO	BUHASA ACCOMMODATION COMPLEX	MDB,SMDB, MCC & DB	6,000,000.00
4	AL GHURAIR CENTRE	NGC INTERNATIONAL	AL GHURAIR CENTRE EXPANSION	MDB,SMDB, MCC& FINAL DB	6,000,000.00
5	JUMEIRAH BEACH RESIDENCE	DAR	JUMEIRAH BEACH RESIDENCE	MDBS,MCCS,SMDBS,DBS & CAP. PANELS	4,200,000.00
6	TABREED	ELLERBE BECKET	DISTRICT COOLING PLANT T2 & T3A	MOTOR CONTROL CENTRE	4,157,600.00
7	TABREED	ELLERBE BECKET	DISTRICT COOLING PLANT T4 & 3B	MOTOR CONTROL CENTRE	4,147,800.00
8	DUBAI CIVIL AVIATION	KENNEDY & DONKIN	DUBAI AIRPORT EXPANSION TD-196	MDB,MCC,SMDB & DB	3,600,000.00
9	GASCO	S.C.T.P	ASAB ACCOMMODATION COMPLEX	MCC,MDB,SMDB & DB	3,500,000.00
10	DUBAI CIVIL AVIATION	DAR AL-HANDASAH	CENTRAL UTILITY COMPLEXES - 4	MDBS,MCCS,SMDBS & DB	3,317,244.00
11	DUBAI NATIONAL INVESTMENTS	NORR GROUP CONSULTANTS	METROPOLITAN BEACH - RESORT TOWERS	MDB,MCC,SMDB,CAP.PANEL & DB	3,000,000.00
12	GULF IMPORT & EXPORT Co.	GULF IMPORT & EXPORT Co.	NFM - AGOM	MCC PANELS	2,750,000.00
13	AL ROSTAMANI GROUP	W.S. ATKINS	21st CENTURY TOWER, DUBAI	LV PANEL,SMDB,DB & MCC	2,600,000.00
14	DUBAI INTERNET CITY	SPP	MEDIA CITY PHASE-III, DUBAI	LV PANEL,SMDB,DB & MCC	2,600,000.00
15	JUMEIRAH BEACH RESIDENCE	HYDER CONSULTING	JBR1- PODIUM	MDB,SMDBS,DBS,MCCS & CAP.BANK	2,600,000.00



## 22.0 MAJOR PROJECTS EXECUTED

SL.No.	CLIENT	CONSULTANT	PROJECT	PRODUCT	VALUE
16	P.W.D	BELGIAN ARAB CONSULTANTS	GENERAL HOSPITAL AL RAHBA	MDB,SYN.PANEL,SMDB,CAP.PANEL & FINAL DB	2,551,385.00
17	MAJID AL FUTTAIM INVESTMENT	WSP	SOUK AL NAKHEEL	MDBS,MCCS,CAPACITOR & DB	2,525,616.00
18	DUBAI INTERNET CITY	ARENCO	DUBAI INTERNET PHASE III	MDB,MCC,SMDB,DB & CAP.PANEL	2,500,000.00
19	DUBAI MEDIA CITY	SCHUSTER, PECHTOLD AND PARTNERS	DUBAI MEDIA CITY PHASE III	MDB,MCC,SMDB,DB CAP. PANEL	2,500,000.00
20	EMMAR	ROBERTS PARTNERS	RESIDENCES AT BURJ DUBAI	MDBS, SMDBS, MCCS, DB	2,452,000.00
21	TABREED	TABREED	AL- AIN AIR COLLEGE	LV MCC,MDB & MCC	2,203,888.00
22	EMIRATES OF ABU DHABI GENERAL INDUSTRY CORPORATION	W. S. ATKINS & PARTNERS OVERSEAS	ABU DHABI INDUSTRIAL CITY	MDB,SMDB,CAP.PANEL,FEEDER PILLAR, FINAL DB & CONTROL PANELS	2,050,000.00
23	EMMAR PROPERTIES	NORR GROUP CONSULTANTS	MARINA TOWER	MSB,MCC,SMDB & DB	1,963,000.00
24	NATIONAL HYDRO ELECTRIC POWER CORPORATION Ltd.	SNC LAVALIN INC.	CHAMERA HYDROELECTRIC PROJECT, STAGE-II HIMACHAL PRADESH	MDB, SMDB & FINAL DB	1,667,000.00
25	MAJID AL FUTTAIM INVESTMENTS	HALFORD ASSOCIATES	SOUK AL NAKHEEL - SNOW DOME	MDB,MCC,SMDB,CAP.PANEL & DB	1,647,680.00
26	ADCO	ECG ENGINEERING	BAB INFRASTRUCTURE & BAB 13	LV PANEL,SMDB,DB & MCC	1,589,000.00
27	EMMAR	NORR GROUP	EMMAR HEAD QUARTERS, DUBAI	LV PANEL,SMDB,DB & MCC	1,500,000.00
28	AL GHURAIR GROUP LLC	AL GURG CONSULTANTS	DUBAI POLYFILM CO. EXPANSION	MDBS,MCCS,SMDBS & DB	1,500,000.00
29	EMARAT	ARENCO	G+4 OFFICE COMPLEX PLOT. NO-155/DUBAI	MDB,SMDB & FINAL DB	1,455,090.00
30	DUBAI INTERNET CITY	AL TURATH ENGG.	FALCON CABLE LANDING STATION P-109	LV PANEL,SMDBS,CAP.BANK,DBS & ISOLATOR PANEL	1,315,000.00



## 22.0 MAJOR PROJECTS EXECUTED

SL.No.	CLIENT	CONSULTANT	PROJECT	PRODUCT	VALUE
31	JEBEL ALI CONTAINAR GLASS FACTORY	STONE & WEBSTER	JEBEL ALI CONTAINAR GLASS FACTORY	MAIN DISTRIBUTION BOARD	1,323,000.00
32	EMIRATES OF ABU DHABI WORK DEPARTMENT	AL BURJ. ENGG. CONSULTANTS	GULF LIBRARY MANUSCRIPTS & STUDIES CENTRE	MDB, SMDB, CAP. PANEL, FINAL DB & CONTROL PANELS	1,288,800.00
33	EMIRATES OF ABU DHABI GENERAL INDUSTRY CORPORATION	W. S. ATKINS & PARTNERS OVERSEAS	ABU DHABI INDUSTRIAL CITY (CONTRACT-2A)	MDB, SMDB, CAP. PANEL, FINAL DB & CONTROL PANELS	1,220,000.00
34	TABREED	SHANKLAND COX Ltd.	COOLING PLANTS FOR AL TOWAISA MILITARY BASE	MCC, ATS & DB	1,213,000.00
35	M.P.W.H	H D P OVERSEAS	KALBA HOSPITAL, SHARJAH	LV PANEL, SMDB, DB & MCC	1,100,000.00
36	H.E.KHALIFA BIN AHMED AL OTAIBA	SYR CONSULT	FOUR POINT HOTEL BY SHERATON AT SHARJAH	MDB, MCC, SMDB & FINAL DB	1,086,275.00
37	W.E.D.	EWBANK PREECE	MIRFA POWER & DISALINATION	DISTRIBUTION BOARDS	1,042,806.00
38	WED - ALAIN	CANSULT	100 WELLS & TELEMETRY SYSTEM IN SHUWAIB	L.T. SW, BD, SYN. PANEL, SOFT STARTER PNL, WELL HEAD CONTROL PANELS	1,000,000.00
39	NATIONAL PROJECTS	EREX CONSULTANT	AL REEF COMPOUND	MDB, SMDB & CAP. PANEL	1,000,000.00
40	ADGAS	IAN BANHAM & ASSOCIATES	PROJECT-8003/DAS ISLAND	MDB, MCC, SMDB & FINAL DB	965,000.00
41	TABREED	TABREED	TABREED COOLING PLANT-3B EXTENSION	MOTOR CONTROL CENTRE	923,680.00
42	ABUDHABI NATIONAL OIL CO.	KHATIB & ALAMI	NEW LPG FILLING PLANT-MUSSAFAH	ANNOLAC, MDB, MCC & ATS	900,000.00
43	TABREED	TABREED	TABREED PHONIX PHASE-1	MOTOR CONTROL CENTRE	880,000.00
44	CUMMINS DIESEL	CUMMINS DIESEL	IRAQ PROJECTS	MAIN DISTRIBUTION BOARD	875,000.00
45	FIRST GULF BANK	AL SALAAM	FIRST GULF BANK HEAD QUARTERS	MDB, SMDBS, DBS & MCCS	867,000.00



## 22.0 MAJOR PROJECTS EXECUTED

SL.No.	CLIENT	CONSULTANT	PROJECT	PRODUCT	VALUE
46	DEFENCE	DEFENCE	MW - 1590	MDB, SMDB & DB	837,000.00
47	CIVIL AVIATION DUBAI	INT'L BECHTEL INC.	TD51 DUTY FREE WARE HOUSE	MAIN DISTRIBUTION BOARD	816,830.00
48	BURJUMAN CENTRE L.L.C	DAR-AL-HANDASAH	BURJUMAN CENTER EXPANSION DUBAI	SMDBS, DBS, MCP & METER CABINET	801,350.00
49	P.W.D	W. S. ATKINS & PARTNERS OVERSEAS	GUARD ADMINISTRATION BUILDING AL AIN	MDB, ATS PANEL, SMDB, FINAL DB & CAP. PANELS	797,375.00
50	R.A.K. CERAMICS	R.A.K. CERAMICS	MODERN CERAMICS-9	MDBS, CAP. BANK & SMDBS	790,000.00
51	DUBAI MUNICIPALITY	ITAL CONSULT	CUSTOMS HEAD QUARTERS & DOC	MDB, SMDB & FINAL DB	770,000.00
52	WOMEN'S ASSOCIATES	IAN BANHAM ASSOCIATES	WOMEN'S ASSOCIATION BUILDING	MDB, SMDB & FINAL DB	700,000.00
53	DUBAI INTERNET CITY (TECOM)	AL TURATH	MAIN TELEPORT AT JABEL ALI, DUBAI	LV PANEL, SMDB, DB, & MCC	700,000.00
54	UNITED ARAB EMIRATES MINISTRY OF PUBLIC WORKS & HOUSING	GIBB MIDDLE EAST	COMPREHENSIVE TECH. SCHOOL AT RAK	MDB, SMDB, DB & CAP. PANELS	673,157.00
55	MAJID AL FUTTAIM	RENAULT & PARTNERS	AJMAN RETAIL DEV. - CONTINENT FIT OUT	MDB, SMDB, DB & SYN. PANEL	660,000.00
56	DUBAI CIVIL AVIATION	DAR AL HANDSAH	DUBAI AIRPORT CARGO VILLAGE EXPANSION EMIRATES SKY CARGO CENTRE	MDB, MCC & DB	645,000.00
57	SHEIKH SULTAN SURROR AL DHAHERI	AL SUWEIDI ENGG CONSULTANTS	SHEIKH BUILDING	MDB, SMDBS, DBS & MCCS	641,000.00
58	EAST COST CO.	INTERNAL ENGG. CENTER	50 VILLAS PROJECTS AT RAS AL KHAIMA	MDB, SMDB & FINAL DB	630,000.00
59	DUBAI INTERNET CITY	AL TURATH ENGG. CONSULTANT	POP-JUMAIRAH ISLAND	MDB, SMDB, CAP. PANEL & DB	600,000.00
60	DUBAI INTERNET CITY	AL TURATH ENGG. CONSULTANT	MAIN TELEPORT STATION AT JABEL ALI, DUBAI	MDB, SMDB, CAP. PANEL & DB	599,980.00



## 22.0 MAJOR PROJECTS EXECUTED

SL.No.	CLIENT	CONSULTANT	PROJECT	PRODUCT	VALUE
61	ABU DHABI MUNICIPALITY	FEDERIC R. HARRIS INC.	MINA ZAYED FREE ZONE	STREET LIGHTING CONT.PANEL	592,000.00
62	H.H SHEIKH MANSOOR	INTEGRATED DESIGN BUREAU	COMMERCIAL BUILDING	MDB,SMDBS & DB	590,000.00
63	RULERS REPRESENTATIVE IN EASTERN REGION	KEO INTERNATIONAL CONSULTANTS	DIWAN BUILDING	MDB,SMDBS,CAP.PANEL & DB	590,000.00
64	HYATT REGENCY	SERVEU	HYATT REGENCY	CHILLER PANEL,VFD PANEL	580,000.00
65	ZADCO	SUIDAN & ASSOCIATES	ZIRKU FACILITIES NEW CONT. CAMP	MDB,SMDB & FINAL DB	579,000.00
66	EMIRATES OF ABU DHABI WORK DEPT.	TECHNICAL STUDIES BUREAU	AL RAHA BEACH RESORT, ABU DHABI	SMDB,DB & CONTROL PANELS	555,000.00
67	ABU DHABI MUNCIPALITY	ARABIAN ENGINEERING CENTRE	PUMPS, GENERATOR & 11KV OVERHEAD LINES IN BEDAA GHANEM AREA.	MDB & SYNCHRONISING PANEL	549,000.00
68	P.W.D	BELGIAN ARAB CONSULTANT BUREAU	SGENERAL HOSPITAL AL RAHBA	MDB & AC PANELS	540,000.00
69	ARCOI QATAR INC.	PARSONS TECHNIP	ARCO AL RAYYAN OIL DEVELOPMENT, QATAR	MDB,SMDB & FINAL DB	537,147.00
70	GOVERNMENT OF ABU DHABI GENERAL AUTHORITY FOR HEALTH CARE	EHA CONSULTING ENGINEERS	ADDITION, ALTERNATION,MAINTENANCE WORKS FOR TAWAM HOSPITAL AL AIN	MDB & CAPACITOR BANKS	530,000.00
71	INTERNATIONAL CAPITAL TRADING	BIONA CONSULTING ENGG	DEVELOPMENT OF FLATS C1 - C6	MOTOR CONTROL CENTRE	510,000.00
72	P.W.D. AL AIN	T.K.B. CONSULTANT	COMB. SCHOOL - AL HAYER	MDB,SMDB & FINAL DB	504,000.00
73	GASCO	S.C.T.P	BAB ACCOMMODATION COMPLEX	MCC,MDB,SMDB & DB	500,000.00
74	QATAR TELECOMMUNICATION	QATAR TELECOMMUNICATION	IDC BUILDING- QATAR	MDB,MCCS & DB	499,152.00
75	W.E.D	D. BALFOUR & SONS	MARFA HILL TOP PUMPING STATION	MOTOR CONTROL CENTRE	487,500.00



## 22.0 MAJOR PROJECTS EXECUTED

SL.No.	CLIENT	CONSULTANT	PROJECT	PRODUCT	VALUE
76	ADNOC FOD	ADNOC FOD	LOBP / GREASE PLANT	L.V.PANEL BOARDS	480,000.00
77	PWD	MAKHOLOUF	EXTENSION OF EXISTING PRIVATE SUITS AT AL MAFRAQ HOSPITAL	MDB,SMDB & FINAL DB	480,000.00
78	RAS AL KHAIMAH CEMENT Co.	LAFARGE	3100 TPD CEMENT PLANT	CONTROL PANELS	452,530.00
79	W.E.D. ABU DHABI	TEBODIN CONSULTANT	PUMPING FAC. FOR SEA PALACE	MOTOR CONTROL CENTRE	450,000.00
80	SEREX INTL CONSULTANT	SEREX INTL CONSULTANT	WARE HOUSE FOR ADIA AT MUSSAFAH	ATS,CAP.PANEL,SMDB,LVP,DB & MCCB	426,000.00
81	M.P.W. & H. - DUBAI	EHA CONSULTING CENTER.	HIGHER SECONDARY SCHOOLS	MDB,SMDB & FINAL DB	420,000.00
82	AMANA STEEL	MOT MAC DONALD	TUFTED CARPET FACTORY AT MUSSAFAH	LV,CAP.PANEL,SMDB & DB	420,000.00
83	KASSIM ISMAIL AHMED MOHAMMED	SPACE CONSULT	G+10 COMM. PLOT - 416	MDB,SMDB & DB	417,142.00
84	PWD	E. KRAUT CONSULTANT GERMANY	10MG WATER RESERVOIR & PUMPING STATION	CONTROL PANEL,CAP.PANEL & DB	415,000.00
85	ABU DHABI WATER & ELECTRICITY AUTHORITY	ESB INTERNATIONAL	NEW 132/11KV SUBSTATION	AC MDB,SDB & LDB	405,000.00
86	TAWAM HOSPITAL	PAC INTERNATIONAL	AL TAWAM HOSPITAL	MDB,SMDB &FINAL DB	400,000.00
87	AL KHASANA INSURANCE	AGG	AL KHASNA INSURANCE BLDG, ABU DHABI	MDB,MCC,SMDB & FINAL DB	400,000.00
88	AL GAITH HOLDING	NATIONAL ENGINEERING BUREAU	DALMA & YASSAT TOWER, DUBAI	MDB,SMDB & DB	7,053,347.00
89	EMAAR	HYDER CONSULTING	BURJ DUBAI OLD TOWN RESIDENTIAL AT PHASE-3	ACB, MSB, SMDB, CAP.BANK PANEL, METER CABINET, DB & CONTROL PANELS	5,340,667.00
90	JUMEIRAH BEACH RESIDENCE	IAN BANHAM	JUMEIRAH BEACH RESIDENCE -6	MDB, SMDB, MCC, CAP.BANK PANEL & DB	4,000,000.00



## 22.0 MAJOR PROJECTS EXECUTED

SL.No.	CLIENT	CONSULTANT	PROJECT	PRODUCT	VALUE
91	DUBAI FESTIVAL CITY	HYDER CONSULTING	DUBAI FESTIVAL CITY	MDB, SMDB, MCC, CAP.BANK PANEL & DB	14,500,000.00
92	ZAYED UNIVERSITY	SHANKLAND COX Ltd	ZAYED UNIVERSITY	MDB, SMDB, MCC, CAP.BANK PANEL & DB	4,500,000.00
93	EMAAR	HYDER CONSULTING	BURJ DUBAI PHASE -3	MDB, SMDB, MCC, CAP.BANK PANEL & DB	2,750,000.00
94	Mr. MOHAMMAED ABDALLAH AL GERGAWI	IAN BANHAM	AL SOUFOUTH MIXED USE DEVELOPMENT DUBAI	MDB, SMDB, MCC, CAP.BANK PANEL & DB	2,100,000.00
95	EMAAR	HYDER CONSULTING	BURJ DUBAI PHASE -3	MDB, SMDB, MCC, CAP.BANK PANEL & DB	5,300,000.00
96	Mr. HUMAID AHAMED BIN DRAI	CCD	PARK PALACE	MDB, SMDB, MCC, CAP.BANK PANEL & DB	3,000,000.00
97	EMAAR	HYDER CONSULTING	DUBAI MARINA-7W7X- DUBAI	MDB, SMDB, MCC, CAP.BANK PANEL & DB	6,300,000.00
98	EMAAR	NOOR GROUP	BURJ VIEWS PLOT NO 85	ACB, MCC, SSB, CAP.BANK PANEL & DB	9,000,000.00
99	DUBAI INTERNATIONAL MARINE CLUB	ARCH GROUP	G+9 STOREYED LUXUARY BEACH RESORT AL MINA SEYAHI DUBAI	MDB, SMDB, MCP, CAP.BANK PANEL & DB	3,600,000.00
100	TABREED	SNC LAVALIN GULF CONTRACTORS	DIST. COOLING PLANT AT UNIVERSITY LOCATED AT KHALIA CITY	MCC, VFD PANELS AND CAP.BANK PANEL	2,032,591.00
101	DUBAI MUNICIPALITY	AL TURATH ENGG CONSULTANTS	COLD STORAFGE AT CENTRAL FRUIT AND VEG. MARKET	L.V.PANEL, MDB, SMDB, CAP.BANK PANEL & DB	4,775,000.00
102	ABU DHABI GAS INDUSTRIES	SNAMPPROGETTI	GASCO RUWAIS 3 <sup>rd</sup> NGL TRAIN	MCC	610,000.00
103	UNITED TEXTILE FACTORY	CONCEPT CONSULTING ENGINEERING	UNITED TEXTILE FACTORY ON PLOT NO 45. FUJAIRAH	MDB, SMDB, CAP.BANK PANEL & DB	1,305,133.00
104	GULF PHARMACEUTICAL INDUSTRIES	GULF PHARMACEUTICAL INDUSTRIES	JULPHAR GULR PHARMACEUTICAL INDUSTRIES	MDB	1,050,000.00
105	FIRST GULF	IAM BANHAM	COMM. RESI BLDG, AL NADHA	MDB, SMDB, ATS, CAP.BANK PANEL, DB & ISOLATOR PANELS	994,804.00



## 22.0 MAJOR PROJECTS EXECUTED

SL.No.	CLIENT	CONSULTANT	PROJECT	PRODUCT	VALUE
106	DUBAI CIVIL AVIATION	DAR AL HANDSAH	DUBAI INTRTNATIONAL AIRPORT EXPANRION (PHASE-2)	CONTROL PANELS	663,017.00
107	RAS LAFFAN LIQUIFFIED NATURAL GAS CO. Ltd.	RAS LAFFAN LIQUIFFIED NATURAL GAS CO. Ltd.	GASCO RUWAIS 3 <sup>rd</sup> NLG TRAIN	CONROL PANELS	2,379,993.00
108	AL FUTTAIN REALESTATE	KLING CONSULT	AL FUTTAIM MOTOR PARTS DISTRIBUTION CENTER @ DIP	MDB, SMDB, CAP.BANK PANEL & DB	768,911.00
109	SAEED HUMAID MATAR AL TAYER	IAM BANHAM	AL TAYER TOWER – AL BARSHA	MDB, SMDB, CAP.BANK PANEL & DB	1,417,465.00
110	ABDULLA HASSAN AL RUSTAMANI	IAM BANHAM	AL ROSTAMANI TOWERS	MDB, SMDB, CAP.BANK PANEL & DB	1,315,000.00
111	DEPARTMENT OF CIVIL AVIATION	ADPI / DAR AL HANDSAH	JXB1/DB/220 CARGO TERMINAL BUILDING	MDB, SMDB, MCC, CAP.BANK PANEL & DB	4,811,000.00
112	DUBAI SPORTS CITY	SINCLARIKNIGHT MERS (SKM)	CRICKET STADIUM-S3	MDB, SMDB, CAP.BANK PANEL & DB	1,569,866.00
113	KLEINDIENST & PARTNERS	HALCROW	EUROPEAN BUSINESS CENTRE	MDB, SMDB, CAP.BANK PANEL, CHILLER PANELS & DB	702,404.00
114	KHARAFI NATIONAL CO	KHARAFI NATIONAL CO	LABOUR CAMP. DUBAI	MDB, SMDB, SYNCHRONISING PANEL	519,984.00
115	DUBAI POLICE FORCE	ARIF & BINTOAK	TRANSPOET AND RESCUE DEPARTMENT COMPLEX FOR DUBAI POLICE FORCE	L.V. PANEL , SMDB, DB & FEEDER PILLER	1,146,455.00
116	OMNIYAT	SPEC	ONE @ BUSINESS BAY	L.V. PANELS , SMDB, MCC, CAP.BANK PANEL & DB	2,160,000.00
117	ENGINEERS OFFICE	ENGINEERS OFFICE	EVENT ARENA @ AL MARMOOM, DUBAI	MDB, SMDB, CAP.BANK PANEL & DB	466,723.00
118	JIWIN INVESTMENTS	LACASA	G+2 LABOUR ACCOMODATION	MDB, SMDB, CAP.BANK PANEL & DB	1,853,050.00
119	LINK INVESTMENTS	BAINONA	DEVELOPMENT OF FLATS C1/Z-9 SHK. MOHD BIN ZAYED CITY AXD	MDB, CAP.BANK PANEL & DB	463,000.00
120	ABU DHABI GAS INDUSTRIES	SNAM PPROGETTI	GASCO RUWAIS 3 <sup>rd</sup> NGL TRAIN	MCC	1,000,000.00



## 22.0 MAJOR PROJECTS EXECUTED

SL.No.	CLIENT	CONSULTANT	PROJECT	PRODUCT	VALUE
121	EMITATES OF ABU DHABI	WS ATKINS & PARTNER OVERSEAS	ETHIHAD INTERIM TERMINAL CONSTRUCTION, AXD	MDB, SMDB, MCC, CAP.BANK PANEL & DB	6,700,000.00
122	H.H. SHEIKH HAMDAN BIN ZAYED AL NAHYAN	IAN BANHAM & ASSOCIATES	AL KAMAL TOWER	MCC & CAP.BANK PANEL	1,250,000.00
123	H.H. SHEIKH HAMDAN BIN ZAYED AL NAHYAN & LINK INVESTMENT	DEWAN	COMPLEX OF 18 VILLAS FOR H.H. SHKA. MOZA BINT HAMDAN AL NAHYAN	MDB, SMDB, CAP.BANK PANEL & DB	910,000.00
124	DEPARTMENT OF THE PRESIDENTS AFFAIRS ABU DHABI	AL SALAAM	MISCELLANEOUS BUILSDINGS AT ABU AL ARYAD ISLAND	MDB, SMDB, CAP.BANK PANEL & DB	407,560.00
125	HIGHER CORPORATION FOR SPECIALIZED ECONOMIC ZONES INDUSTRIAL CITY OF AXD	AL RAMAHI ENGG.	ABU DHABI BUSINESS HUB, PHASE-1 OFFICE COMPLEX	MDB, SMDB & DB	887,299.00
126	ABU DHABI NATONAL HOTEL	AL SALAAM	SPECTRUM GLASS FACTORY-AXD	MDB, SMDB, ATS, & CAP.BANK PANEL	1,089,999.00
127	GENERAL AUTHORITY FOR HEALTH SERVICES	HDP (OVERSEAS) Ltd.	PRIMARY HEALTH CARE CENTER AT AL MUWAIJI- AL AIN	MDB, SMDB, CAP.BANK PANEL & DB	464,530.00
128	H.H. SHEIKH TAHNOON BIN MOHAMED AL NAHYAN	AL SALAAM	AL AIN ROTANA HOTEL EXTENTION PHASE-1	MDB, SMDB, CAP.BANK PANEL & DB	992,416.00
129	MUBADALA DEVELOPMENT	COX GROUP	UAE UNIVERSITY NEW CAMPUS	MDB, SMDB, MCC, CAP.BANK PANEL & DB	20,790,260.00
130	SHARJAH MUNICIPALITY	HALLCROW	DIBBA AL HIGN SEWARAGE NETWORK PHASE-1	MDB, MCC & MCP	1,033,127.00
131	GOVT. OF DUBAI AIRPORT FREE ZONE AUTHORITY	M. ENGINEERING. INC	CENTRAL CHILLING PLANT MODIFICATION	MDB, MCC, CAP.BANK PANEL & DB	463,795.00
132	TAMEER	ADAN SAFFARINI	PRINCESS TOWER (DXB)	MDB, SMDB, CAP.BANK PANEL & DB	3,439,303.00
133	MAF SHOPPING MALLS	WSP MIDDLE EAST	MIRDIF CITY CENTRE	MDB, SMDB, CAP.BANK PANEL & DB	23,122,450.00
134	ALDAR (MASSEERA)	HALCROW	YAS ISLAND DEVELOPMENT	MDB	1,025,000.00
135	EMIRATES INTERGRATED TELECOMMUNICATIONS COMPANY PJSC (DU)	AL TURATH ENGINEERING	TECOM INVESTMENT FZ-L.L.C, SPORTS CITY VICTORY HEIGHTS & VILLA AL WARQAA	MDB, SMDB, ATS, CAP.BANK PANEL & DB	1,773,446.00



## 22.0 MAJOR PROJECTS EXECUTED

SL.No.	CLIENT	CONSULTANT	PROJECT	PRODUCT	VALUE
136	GENERAL AUTHORITY FOR HEALTH SERVICES	GENERAL HEALTH AUTHORITY	PRIMARY HEALTH CARE CENTER IN MADINAT ZAYED – ABU DHABI	MDB, SMDB, CAP.BANK PANEL & DB	698,000.00
137	BEACON EDUCATION	W.S. ATKINS	BEACON EDUCATION SCHOOLS AT AL RAHA GARDENS (AXD)	MDB, SMDB, CAP.BANK PANEL & DB	557,740.00
138	OMAR AL MANA (QATAR)	ARCHITECTURAL CONSULTING GROUP	AL MANA VILLAS	M.V. PANEL, SMDB, CONTROL PANEL & ATS PANEL	600,000.00
139	AL FUTTAIM REAL ESTATE	N.E. AZZAM & PARTNERS	INTERCON HOTEL STAFF	MDB, SMDB, MCC, CAP.BANK PANEL & DB	2,800,000.00
140	DUBAI PROPERTIES	KHATIB & ALAMI	BAY SQUARE AT BUSINESS BAY	MDB, SMDB & DB	9,000,000.00
141	NAKHEEL	DYNAMIC ENGINEERING CONSULTANT	613 VILLAS @ JUMEIRA VILLAGE	MDB, SMDB, METER CABINET, CAP.BANK PANEL & DB	5,500,000.00
142	EMIRATES MEDIA ASSOCIATION	TAMMER CONSULTING ENGINEERING & MANAGEMENT	UNITED PRINTING AND PUBLISHING	MDB, SMDB, ACB PANEL, CAP.BANK PANEL & DB	2,200,000.00
143	ALDAR	CLARKEBOND MIDDLE EAST ENGINEERING AND MANAGAMENT	LABOUR VILLAGE @ AL AIN	MDB, SMDB, CAP.BANK PANEL & DB	4,550,000.00
144	TABREED	TABREED	TABREED COOLING PLANT RB-04 (017721), AL RAHA BEACH, AXD	MCC, CAP.BANK PANEL & CONTROL PANEL	13,254,046.00
145	TABREED	TABREED	TABREED COOLING PLANT RB-02 (017721), AL RAHA BEACH, AXD	MCC, CAP.BANK PANEL & CONTROL PANEL	13,267,166.00
146	TABREED	TABREED	TABREED COOLING PLANT T-07, P-7301 ZAYED MILITARY CITY,( AXD)	L.V. MCC & CAP.BANK PANEL	3,189,485.00
147	TABREED	TABREED	TABREED COOLING PLANT T-08, P-7301 ZAYED MILITARY CITY,( AXD)	L.V. MCC & CAP.BANK PANEL	3,330,185.00
148	DEPARTMENT OF THE PRESIDENTS AFFAIRS	DEWAN ARCHITECTS & ENGINEERINGS	AL RAWDHA PALACE	CAPACITOR BANK PANELS	830,000.00
149	GOVERNMENT OF DUBAI ROADS & TRANSPORT AUTHORITY	ATKINS	DUBAI METRO-RASHIDIYA DEPOT	MDB & MCC	1,225,000.00
150	UAE ARMED FORCES DIRECTORATE OF MILITARY WORKERS (DMW)		MW/SOC/CFD/SC/208/247	LV PANES & CAP. PANELS	2,038,940.00



## 22.0 MAJOR PROJECTS EXECUTED

SL.No.	CLIENT	CONSULTANT	PROJECT	PRODUCT	VALUE
151	PACIFIC CONTROLS	ORBIT ENGINEERING CONSULTANTS	CLOUD COMPUTING CENTER	MDB, SMDB, MCC, CAP. PANEL & DB	4,153,600.00
152	H.H SHAIKH RASHID BIN KHALIFA AL MAKTOUM	M/S. ARKIPLAN CONSULTING ARCHITECTS & ENGINEERS	B+G+12 FLOOR PARKING BUILDING LATIFA TOWER	MDB, SMDB, MCC, CAP. PANEL & DB	1,412,729.00
153	GOVERNMENT OF DUBAI ROADS & TRANSPORT AUTHORITY	ATKINS	PROJECT DM-001 DUBAI METRO PROJECT - GREEN LINE	MDB, SMDB & DB	3,559,140.00
154	GOVERNMENT OF DUBAI ROADS & TRANSPORT AUTHORITY	ATKINS	DUBAI METRO(DM-001)-RASHIDIYA DEPOT	MCC	2,247,788.00
155	SHETH ESTATE (INTERNATIONAL) Ltd.	WS ATKINS & PARTNERS OVERSEAS	IRIS BAY PLOT NO.BB.A.02.005	MDB, SMDB, MCC, CAP. PANELS, CONTROL PANELS & DB	3,211,085.00
156	JULPHAR		JULPHAR - J10	LV. PANEL	850,000.00
157	Mr. ABDULAH HAMAD OBAID AL SHAMSI	AL NAHDA ENG. CONSULTANT	PROPOSED (G+4P+20) BLDG	MDB, SMDB, CAP. PANEL & DB	905,815.00
158	SHARJAH MUNICIPALITY	M/S.HALCROW	DIBBA AL HISN FOUL MAIN LIFTING PUMP STATION TANKER DISCHARGE FACILITY	MDB, MCC & CAP. PANEL	849,872.00
159	ABUDHABI INVESTMENT COUNCIL	ARUP	ABUDHABI INVESTMENT COUNCIL NEW HEADQUARTERS	MDB & ACB PANELS	1,023,649.00
160	INTERNATIONAL CAPITAL TRADING	RAFIK EL - KHOURY & PARTNERS	AL-RAHA BEACH HOTEL EXTENSION ABUDHABI UAE.	MDB, SMDB, MCC, CAP. PANELS, CONTROL PANELS & DB	1,234,000.00
161	GIFFIN TRAFFIKS LLC	FIRAS ENGINEERING CONSULTANT	FACTORY	MDB, SMDB, CAP. PANEL & DB	1,032,000.00
162	EMIRATES LAND GROUP POST BOX-26536, ABUDHABI UAE.	RAMBOLL	SHINING TOWERS AL KHALDIA COMPLEX PLOT-C9, SECTOR-W9.	MCC & CONTROL PANELS	958,766.00
163	ADNOC		RUWAI'S HOUSING COMPLEX EXPANSION - PHASE III	CAP. BANK PANELS	1,893,771.00
164	CROWN PAPER MILL LTD.	CONSULTING ENGINEERING GROUP	CROWN PAPER MILL FACTORY	MDB's	854,125.00
165	ABUDHABI INVESTMENT COUNCIL	ARUP	ABUDHABI INVESTMENT COUNCIL NEW HEADQUARTERS	MDB's, ACB PANEL, GENSET PANEL & ATS PANEL	3,483,315.00



## 22.0 MAJOR PROJECTS EXECUTED

SL.No.	CLIENT	CONSULTANT	PROJECT	PRODUCT	VALUE
166	MUBADALA	AECOM	CLEVELAND CLINIC - ABU DHABI	MDB, SMDB, MCC, CAP. PANEL & DB	35,000,000.00
167	KHARAFI NATIONAL CO.(L.L.C.)	IAN BANHAM AND ASSOCIATES	KHARAFI NATIONAL OIL AND GAS EQUIPMENT FABRICATION PJSC	MDB, SMDB & DB	3,235,864.00
188	EMIRATES LAND GROUP	RAMBOLL	SHINING TOWERS OF ABUDHABI AL KHALDIA COMPLEX	MDB, ACB PANELS, ATS, SMDB, CAP. PANEL & DB	2,448,075.00
199	H.E. SHEAIKH AHMED BIN SAIF BIN MOHAMMAD AL NAHYAN	ACG - ARCHITECTURAL CONSULTING GROUP	NOVOTEL & IBIS HOTEL, MUSSAFAH, ABU DHABI	MDB, ATS, SMDB, MCC, CAP. PANELS, CONTROL PANELS & DB	3,650,750.00
170	ALDAR	HALCROW INTERNATIONAL PARTNERSHIP	YAS ISLAND DEVELOPMENT SOUTHERN TUNNEL CROSSING	MDB's	2,335,000.00
171	DEPARTMENT OF THE PRESIDENTS AFFAIRS, ABU DHABI		PRIVATE VILLA AT LA MISERE SEYCHELLES	MDB, SMDB, MCC, CAP. PANEL & DB	3,162,782.00
172	DEPARTMENT OF THE PRESIDENTS AFFAIRS, ABU DHABI		PRIVATE VILLA AT BARBARON SEYCHELLES	MDB, SMDB, MCC, CAP. PANEL & DB	3,771,656.00
173	TABREED	TABREED	TABREED COOLING PLANT SHAMS ISLAND (017906) - SM01, ABUDHABI, U.A.E	LV. MCC & MCC's	4,619,304.00
174	YAHSAT(UNITED ARAB EMIRATES)	ALTURATH ENGINEERING CONSULTANTS	YAHSAT SGS PROJECT SITE-A AL FALAH SWEIHAN ROAD, ABUDHABI	MDB, SMDB, CAP. PANEL & DB	8,094,364.00
175	ABU DHABI POLICE GHQ POLICE PROJECTS COMMITTEE	ARCH. & PLANNING GROUP (APG)	EXEMPLARY SCHOOL FOR POLICE AL AIN	MDB, SMDB, MCC, CAP. PANEL & DB	1,300,000.00
176	AL DAR	ARCHITECTURE & PLANNING GROUP	AL AIN LABOUR VILLAGE ATSEEH AL LAHAMA - AL AIN	MDB, SMDB, CAP. PANEL & DB	2,247,950.00
177	YAHSAT(UNITED ARAB EMIRATES)	ALTURATH ENGINEERING CONSULTANTS	YAHSAT SGS PROJECT SITE-B AL AIN MILITARY CAMP, AL AIN	MDB, SMDB, CAP. PANEL & DB	3,362,410.00
178	AL GHURAIR CITY	ARIF & BINTOAK	AL GHURAIR CITY EXPANSION (PHASE-II), DUBAI, U.A.E.	MDB, ATS, SMDB, MCC, CAP. PANELS, CONTROL PANELS & DB	17,269,807.00
179	SOROUH REAL ESTATE PJSC	M/S.EWAN	WATANI RESIDENTIAL DEVELOPMENT, PHASE 1A-ABUDHABI, UAE	SMDB's & DB's	2,346,407.00
180		M/s. BURO HAPPOLD CONSULTING ENGINEERS	THE LAND MARK TOWER - ABU DHABI	PDB, SDB, MCC, CAP. PANEL & DB	10,626,570.00





## 23.0 SOME MAJOR REFERENCES



Dubai Festival City



Mirdif City Centre



## 23.0 SOME MAJOR REFERENCES



Abu Dhabi University



BAVARIA Dalma Tower



BAVARIA Yassat Tower



## 23.0 SOME MAJOR REFERENCES



Burj Dubai – Old Town



Etihad Training Complex



## 23.0 SOME MAJOR REFERENCES



Dubai Marina Towers – X1, X2 and X3



Dubai Marina Towers – W1, W2 and W3



Burj Views



## 23.0 SOME MAJOR REFERENCES



Emirates Engineering Center



Emirates Flight Hangar





## 24.0 MAJOR CLIENTS

- Abu Dhabi National Oil Company For Distribution (ADNOC FOD)
- Abu Dhabi Drilling Chemicals & Products Limited (ADDCAP)
- Abu Dhabi Gas Liquefaction & Co. Ltd (ADGAS)
- Abu Dhabi Marine Operating Company (ADMA OPCO)
- Abu Dhabi National Oil Company (ADNOC)
- AD Water and Electricity Authority - Village & Islands Department & Street Lighting Department
- Abu Dhabi Municipality - Irrigation and Street Lighting Departments
- Abu Dhabi Company for Onshore Oil Operations (ADCO)
- Abu Dhabi Gas Industries Limited (GASCO)
- Ajman Fisheries
- Beach Hotel, Abu Dhabi
- Department of Civil Aviation, Abu Dhabi International Airport
- Dubai Ports Authority
- Dubai Police Force
- Dubai Electricity and Water Authority (DEWA)
- Dubai Municipality (DM)
- Department of Civil Aviation (DCA)
- Department of Social Services and Commercial Buildings
- EPPCO and ENOC
- EMARAT



## 24.0 MAJOR CLIENTS

- Emirates Telecommunications Corporation (ETISALAT)
- Ministry of Public Works and Housing (MPWH)
- Ministry of Interior
- Ministry of Information & Culture, Emirates Broadcasting Corporation
- National Petroleum Construction Company
- Public Works Department, Abu Dhabi, Beda Zayed & Al Ain
- Ras Al Khaimah Cement Plant
- Sharjah Electricity and Water Authority (SEWA)
- Sharjah Municipality
- Sharjah Oil Refinery
- Town Planning Department, Abu Dhabi
- UAE Armed Forces G.H.Q.
- Zakum Development Company (ZADCO)
- Dubai Internet City (TECOM)
- Sharjah Police
- EMAAR
- Al Ghurair Group